



**Modern
Auction**

£245,000

Freehold

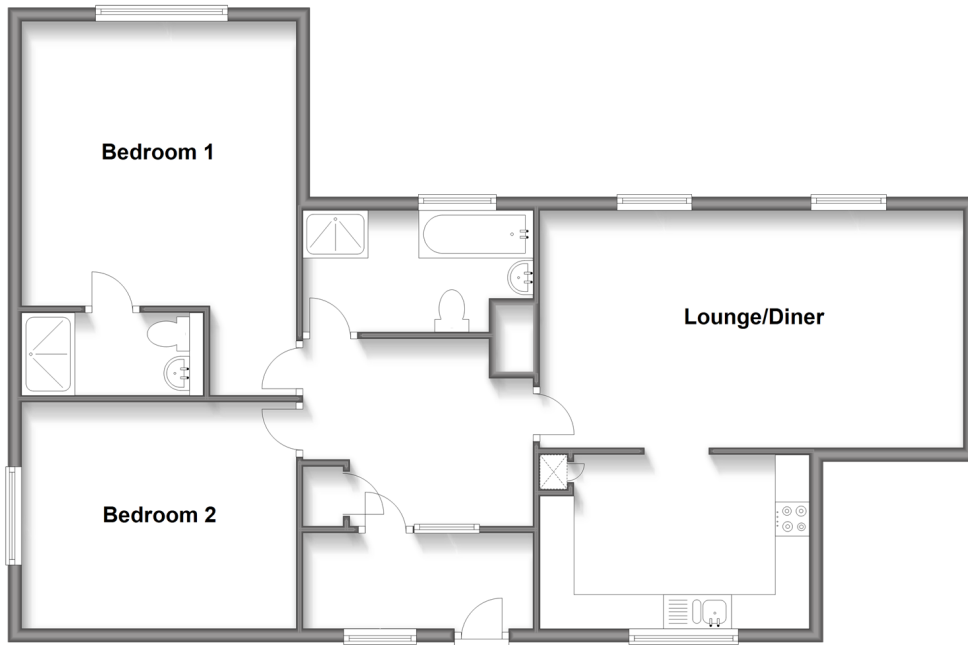
2x  2x  1x 

**Ewell Minnis, Dover,
Kent, CT15**

Wards
Helping you move forwards

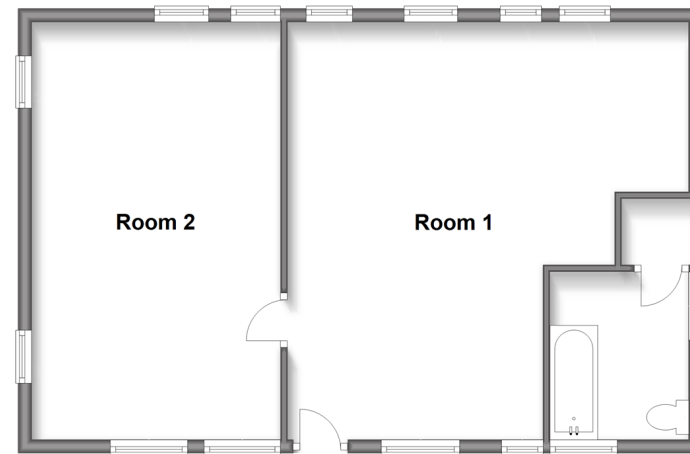
Ground Floor

Approx. 89.9 sq. metres (968.1 sq. feet)



Outbuilding

Approx. 59.5 sq. metres (640.2 sq. feet)



Accommodation

GROUND FLOOR

Lobby
Entrance Hall
Lounge/Diner : 20'4 x 11'7 (6.20m x 3.53m)
Kitchen : 13'0 x 8'4 (3.97m x 2.54m)
Bedroom 1 : 17'10 x 13'4 (5.44m x 4.07m)
En-Suite Shower Room
Bedroom 2 : 13'3 x 10'10 (4.04m x 3.30m)
Bathroom

OUTBUILDING

Room 1 (Outbuilding)
Room 2 (Outbuilding)
Bathroom (Outbuilding)

OUTSIDE

Front Garden
Rear Garden
Off Road Parking



Main features

- Sought after village location of Ewell Minnis
- For sale by modern auction -T&C's apply
- Subject to an undisclosed reserve price
- Buyer's fees apply
- Ideal blank canvas for anyone with creative flair on a large plot
- Great access to both Folkestone and Dover on the Alkham Valley Road



Nearest Schools

Primary Schools: Lydden Primary 1.2 miles, Temple Ewell C of E Primary 1.4 miles, River Primary 1.6 miles
Secondary Schools: Harbour School 2.2 miles, Dover Grammar School for Boys 2.5 miles, Astor College for the Arts 2.5 miles



Transport Information

Train Stations: Kearsney 1.5 miles, Shepherdswell 2.9 miles, Dover Priory 3.2 miles



Address

Ewell Minnis, Dover, Kent, CT15



Directions

For directions to this property please contact us.



Call Dover Branch 01304 214876 ■ wardsofkent.co.uk



■ Legal advice should be taken to verify fixtures/fittings, planning, alterations and/or lease details ■ Appliances & services are untested, dimensions are approximate and floor plans are not to scale



10735452/20240402/TE/GM

Auctioneer's Comments

This property is for sale by the Modern Method of Auction. Should you view, offer or bid on the property, your information will be shared with the Auctioneer, iamsold.

This method of auction requires both parties to complete the transaction within 56 days of the draft contract for sale being received by the buyers solicitor. This additional time allows buyers to proceed with mortgage finance (subject to lending criteria, affordability and survey).

The buyer is required to sign a reservation agreement and make payment of a non-refundable Reservation Fee. This being 4.2% of the purchase price including VAT, subject to a minimum of £6,000.00 including VAT. The Reservation Fee is paid in addition to purchase price and will be considered as part of the chargeable consideration for the property in the calculation for stamp duty liability.

Buyers will be required to go through an identification verification process with iamsold and provide proof of how the purchase would be funded.

This property has a Buyer Information Pack which is a collection of documents in relation to the property. The documents may not tell you everything you need to know about the property, so you are required to complete your own due diligence before bidding. A sample copy of the Reservation Agreement and terms and conditions are also contained within this pack.

The buyer will also make payment of £300.00 including VAT towards the preparation cost of the pack, where it has been provided by iamsold.

The property is subject to an undisclosed Reserve Price with both the Reserve Price and Starting Bid being subject to change.

The seller can instruct iamsold to agree a sale without a bidding process taking place or prior to a closing date. No further bids can be accepted after a buyer has paid a Reservation Fee.

Referral Arrangements

Wards and Auctioneer may recommend the services of third parties to you. Whilst these services are recommended as it is believed they will be of benefit; you are under no obligation to use any of these services and you should always consider your options before services are accepted.

Where services are accepted the Auctioneer or Wards may receive payment for the recommendation and you will be informed of any referral arrangement and payment prior to any services being taken by you.

TO VIEW OR MAKE A BID – Contact *Wards*
Or visit: <https://wardsofkent.iamsold.co.uk>