



Price
£230,000

Freehold

3x  2x  1x 

**Green Close, Whitfield,
Dover, Kent, CT16**

Wards
Helping you move forwards



Main features

- Family house
- Garage and off road parking
- Located in the ever popular village of Whitfield
- No onward chain complications
- PLEASE NOTE: This property has a management company annual charge

Accommodation

GROUND FLOOR

Entrance Hallway

Downstairs Cloakroom

Lounge/Diner: 19'3 x 11'2 (5.87m x 3.41m)

Kitchen : 12'6 x 8'6 (3.81m x 2.59m)

FIRST FLOOR

Landing

Bathroom : 6'5 x 5'5 (1.96m x 1.65m)

Bedroom 1 : 12'8 x 11'1 (3.86m x 3.38m)

En-Suite Shower Room

Bedroom 2 : 12'5 x 8'7 (3.79m x 2.62m)

Bedroom 3 : 7'9 x 5'9 (2.36m x 1.75m) plus
5'1 x 5'3 (1.55m x 1.60m)

OUTSIDE

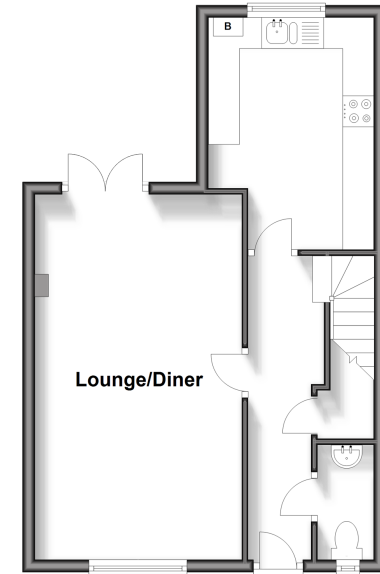
Front Garden

Rear Garden

Garage & Off Road Parking

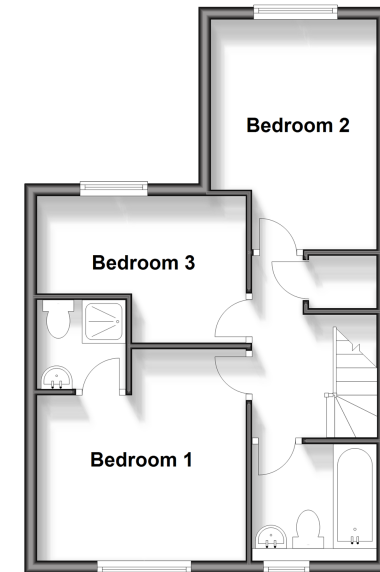
Ground Floor

Approx. 39.9 sq. metres (429.3 sq. feet)



First Floor

Approx. 39.9 sq. metres (429.3 sq. feet)



Call Dover - 01304 214876 ■ wardsofkent.co.uk

- Legal advice should be taken to verify fixtures/fittings, planning, alterations and/or lease details
- Appliances & services are untested, dimensions are approximate and floor plans are not to scale



10735466/20240501/TE/OV