



OVER 60?

Secure this property
for up to **59% less!**

Price

£160,000

Leasehold

2x  1x  1x 

**Stuart Court, Priory Gate
Road, Dover, Kent, CT17**

Wards
Helping you move forwards



Main features

- Top floor purpose built apartment with a long lease
- Residents parking to the rear
- Balcony from bedroom one
- Close to town and Dover Priory railway station
- Ideal first time purchaser or buy to let investment

Accommodation

TOP FLOOR

Entrance Hallway

Lounge: 15'3 x 10'1 (4.65m x 3.08m)

Kitchen : 10'3 x 7'9 (3.13m x 2.36m)

Shower Room

Bedroom 2 : 9'3 x 7'9 (2.82m x 2.36m)

Bedroom 1 : 13'7 x 9'3 (4.14m x 2.82m)

Balcony To The Rear

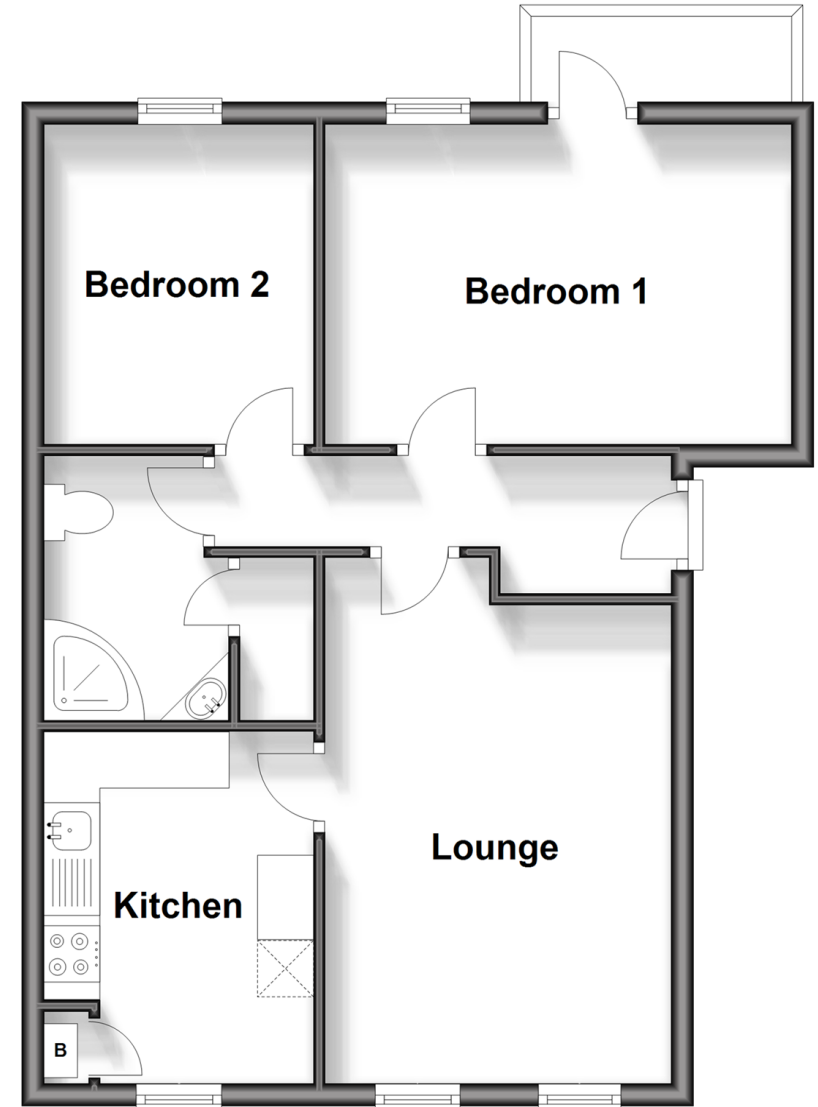
OUTSIDE

Storage Room

Residents Parking

Top Floor

Approx. 50.9 sq. metres (547.4 sq. feet)



Call Dover - 01304 214876 ■ wardsof Kent.co.uk

- Legal advice should be taken to verify fixtures/fittings, planning, alterations and/or lease details
- Appliances & services are untested, dimensions are approximate and floor plans are not to scale
- Through a Homewise Home For Life Plan people aged 60+ can secure this property for up to 59% less, by purchasing a Lifetime Lease.



10735468/20240409/TE/OV