



OVER 60?

Secure this property
for up to **59% less!**

Guide Price
£300,000

Freehold

2x  1x  2x 

**Roman Way, St.
Margarets-At-Cliffe,
Dover, Kent, CT15**

Wards
Helping you move forwards



Main features

- Garage and off road parking for two cars
- Garden with field views
- Situated in a sought-after area with cliff top walks
- Permitted development for a loft conversion ask branch for more details
- Close to local amenities

Accommodation

GROUND FLOOR

Entrance Porch

Entrance Hallway

Lounge : 15'0 x 10'11 (4.58m x 3.33m)

Kitchen: 9'1 x 8'11 (2.77m x 2.72m)

Bedroom 1 : 16'5 x 9'10 (5.01m x 3.00m)

Bedroom 2 : 11'1 x 7'11 (3.38m x 2.41m)

Bathroom

Garden Room: 12'1 x 8'3 (3.69m x 2.52m)

OUTBUILDING

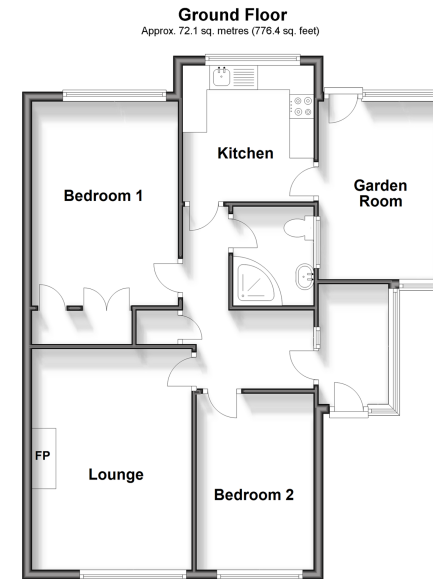
Garage

OUTSIDE

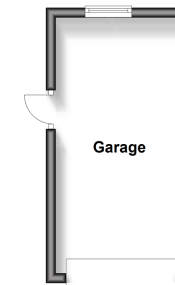
Front Garden

Rear Garden

Off Road Parking



Outbuilding
Approx. 13.8 sq. metres (148.3 sq. feet)



Call Dover - 01304 214876 ■ wardsofkent.co.uk

- Legal advice should be taken to verify fixtures/fittings, planning, alterations and/or lease details
- Appliances & services are untested, dimensions are approximate and floor plans are not to scale
- Through a Homewise Home For Life Plan people aged 60+ can secure this property for up to 59% less, by purchasing a Lifetime Lease.



10735471/20240413/OV/CB