



Guide Price
£250,000

Leasehold

2x  1x  1x 

**The Gateway, Dover,
Kent, CT16**

OVER 60?

Secure this property
for up to **59% less!**

Wards
Helping you move forwards



Main features

- Sought after location of The Gateway
- Fifth floor apartment with stunning views across the English Channel
- 2 balconies, Ideal for relaxing and topping up your tan
- Close to St James's shopping development
- No onward chain complications

Accommodation

FIFTH FLOOR

Entrance Hallway

Balcony

Lounge : 19'4 x 13'2 (5.90m x 4.02m)

Kitchen : 10'2 x 9'5 (3.10m x 2.87m)

Separate Cloakroom

Bathroom : 5'5 x 5'3 (1.65m x 1.60m)

Bedroom 2 : 11'6 x 8'9 (3.51m x 2.67m)

Bedroom 1 : 12'7 x 10'4 (3.84m x 3.15m)

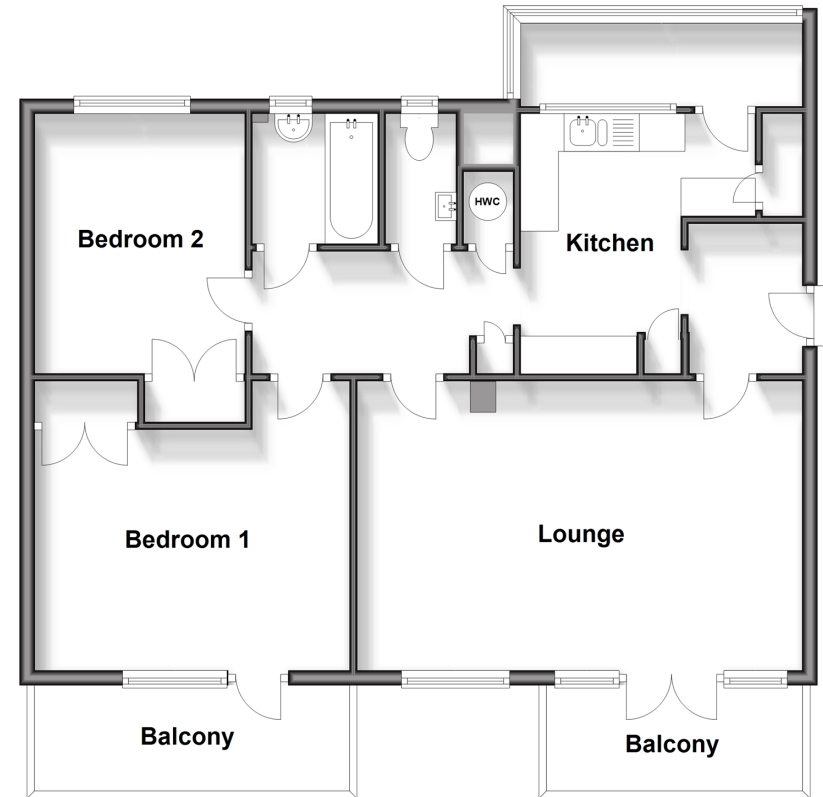
Balcony

OUTSIDE

Allocated Parking

Communal Gardens

Fifth Floor
Approx. 79.9 sq. metres (859.5 sq. feet)



Call Dover - 01304 214876 ■ wardsofkent.co.uk

- Legal advice should be taken to verify fixtures/fittings, planning, alterations and/or lease details
- Appliances & services are untested, dimensions are approximate and floor plans are not to scale
- Through a Homewise Home For Life Plan people aged 60+ can secure this property for up to 59% less, by purchasing a Lifetime Lease.



10735488/20240327/TE/OV