



Price
£350,000

Freehold

4x  3x  2x 

**Hawthorne Close,
Eythorne, Dover, Kent,
CT15**

Wards
Helping you move forwards



Main features

- Large extended family house in a sought after village location
- No onward chain complications
- Ready to move into, ideal for a quick purchase
- Ample off road parking and garage, perfect for when the guests descend
- Great access to the A20 and M20, making it perfect for commuters

Accommodation

GROUND FLOOR

Entrance Hallway
 Lounge : 12'5 x 12'2 (3.79m x 3.71m)
 Kitchen : 12'2 x 11'11 (3.71m x 3.63m)
 Dining Area: 12'2 x 11'2 (3.71m x 3.41m)
 Shower Room
 Family Room : 11'11 x 8'10 (3.63m x 2.69m)

FIRST FLOOR

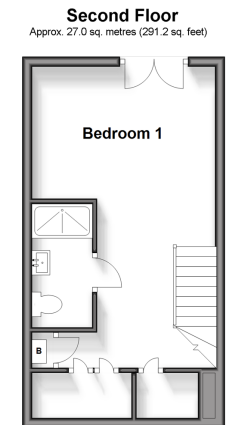
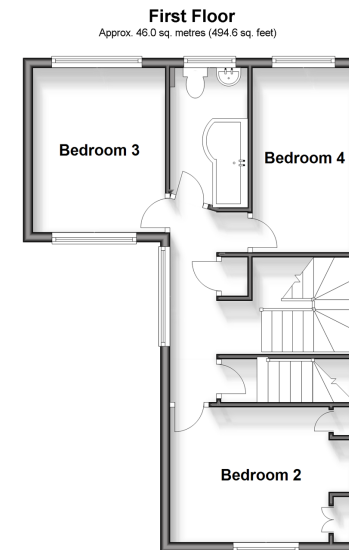
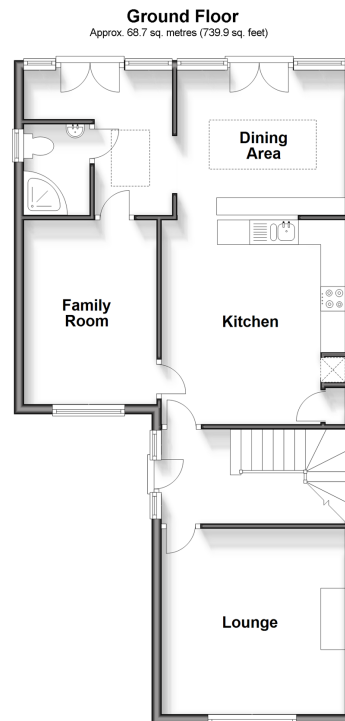
Landing
 Family Bathroom
 Bedroom 2 : 10'2 x 9'6 (3.10m x 2.90m)
 Bedroom 3 : 12'4 x 8'10 (3.76m x 2.69m)
 Bedroom 4 : 12'4 x 7'1 (3.76m x 2.16m)

SECOND FLOOR

Bedroom 1 : 20'0 x 12'2 (6.10m x 3.71m)
 En-Suite Shower Room

OUTSIDE

Driveway To The Front
 Rear Garden
 Garage
 Summer House



Call Dover - 01304 214876 ■ wardsofkent.co.uk

■ Legal advice should be taken to verify fixtures/fittings, planning, alterations and/or lease details

■ Appliances & services are untested, dimensions are approximate and floor plans are not to scale



10735497/20240308/MB/GM