



**Guide Price**  
**£275,000**

**Freehold**

2x  1x  1x 

**Joyes Close, Whitfield,  
Dover, Kent, CT16**

**OVER 60?**

Secure this property  
for up to **59% less!**

*Wards*  
Helping you move forwards





## Main features

- No onward chain
- Garage and off street parking
- Quiet cul-de-sac location
- Ready to move in and enjoy all Whitfield has to offer
- Sought after Whitfield village location

## Accommodation

### GROUND FLOOR

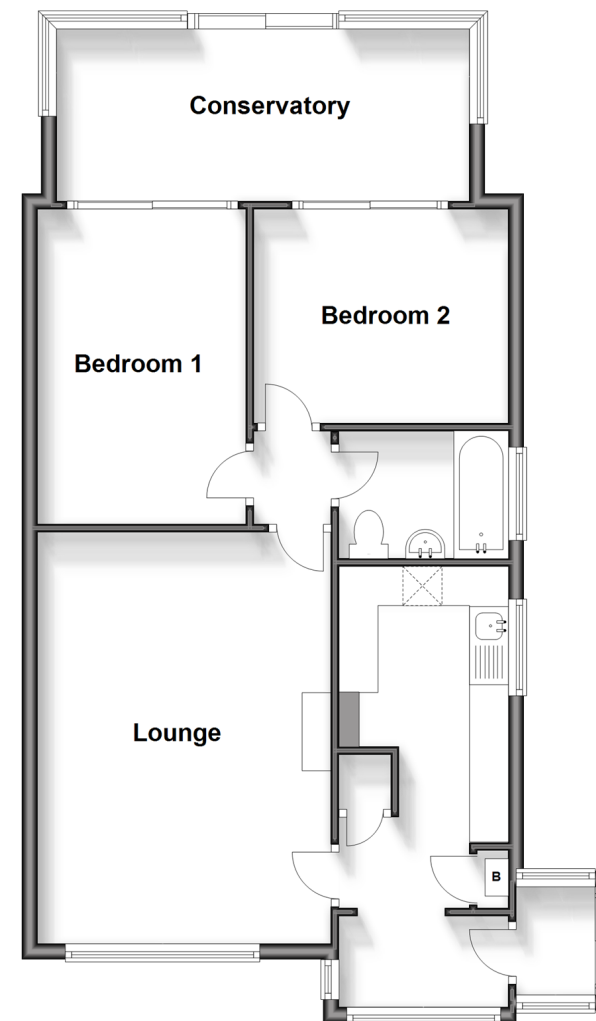
Entrance Porch  
 Entrance Hallway  
 Kitchen : 18'9 x 6'9 (5.72m x 2.06m)  
 Lounge : 13'3 x 12'2 (4.04m x 3.71m)  
 Bedroom 1 : 13'3 x 8'8 (4.04m x 2.64m)  
 Bedroom 2 : 15'9 x 10'4 (4.80m x 3.15m)  
 Bathroom  
 Conservatory : 17'0 x 7'6 (5.19m x 2.29m)

### OUTSIDE

Front Garden  
 Rear Garden  
 Garage  
 Off Road Parking

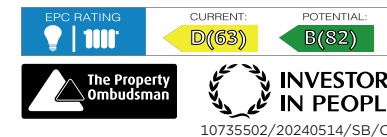
## Ground Floor

Approx. 72.5 sq. metres (780.1 sq. feet)



**Call Dover - 01304 214876 ■ [wardsofkent.co.uk](http://wardsofkent.co.uk)**

- The seller is a person connected with Wards as defined in the Estate Agents Act 1979
- Legal advice should be taken to verify fixtures/fittings, planning, alterations and/or lease details
- Appliances & services are untested, dimensions are approximate and floor plans are not to scale
- Through a Homewise Home For Life Plan people aged 60+ can secure this property for up to 59% less, by purchasing a Lifetime Lease.



10735502/20240514/SB/CB