



**Guide Price**  
**£300,000**

**Freehold**

4x  2x  2x 

**Aspen Drive, Whitfield,  
Dover, Kent, CT16**

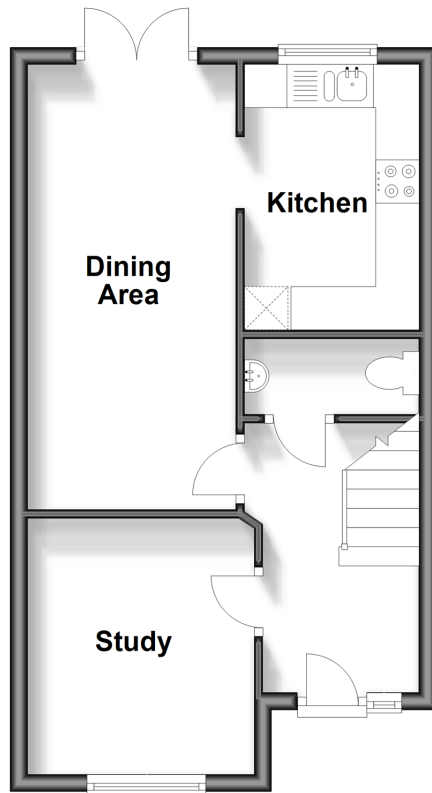
**OVER 60?**

Secure this property  
for up to **59% less!**

*Wards*  
Helping you move forwards

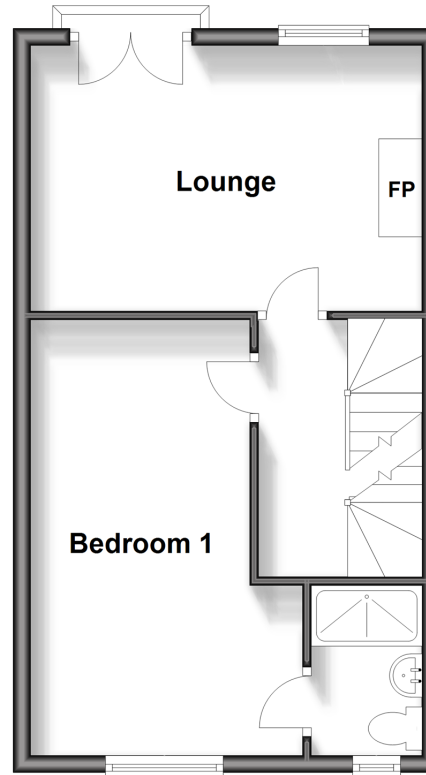
## Ground Floor

Approx. 35.3 sq. metres (380.0 sq. feet)



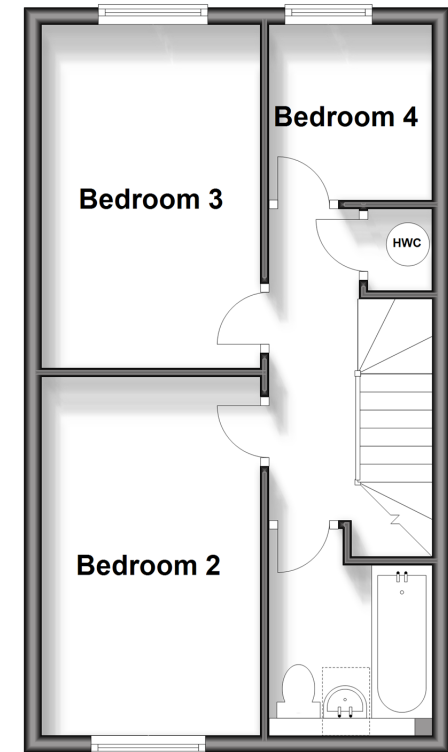
## First Floor

Approx. 37.1 sq. metres (399.3 sq. feet)



## Second Floor

Approx. 37.1 sq. metres (399.3 sq. feet)



## Accommodation

### GROUND FLOOR

Entrance Hallway  
Downstairs Cloakroom  
Study : 9'8 x 8'6 (2.95m x 2.59m)  
Dining Area : 16'9 x 7'10 (5.11m x 2.39m)  
Kitchen : 10'0 x 6'7 (3.05m x 2.01m)

### FIRST FLOOR

Landing  
Bedroom 1 : 16'3 x 10'2 at widest point (4.96m x 3.10m)  
En-Suite Shower Room  
Lounge : 15'1 x 10'1 (4.60m x 3.08m)

### SECOND FLOOR

Landing  
Bedroom 2 : 13'5 x 8'5 (4.09m x 2.57m)  
Bedroom 3 : 13'5 x 8'5 (4.09m x 2.57m)  
Bedroom 4 : 7'2 x 6'5 (2.19m x 1.96m)  
Bathroom

### OUTSIDE

Front Garden  
Rear Garden  
Off Road Parking  
Garage





## Main features

- Large family house set in the sought after Whitfield location
- Garage and off-road parking, ideal for when the guests descend
- Low maintenance rear garden, ideal for those Summer BBQ's
- Beautifully presented throughout, move in and put your feet up
- Ideal home for a growing family



## Nearest Schools

Primary Schools: Whitfield and Aspen School 0.9 miles, Guston C of E Primary 1.2 miles, White Cliffs Primary College for the Arts 1.2 miles  
Secondary Schools: Dover Christchurch Academy 0.3 miles, Dover Grammar School for Girls 2.0 miles.

## Transport Information

Train Stations: Kearsney 1.6 miles, Martin Mill 4.9 miles, Dover Priory 5.2 miles

## Address

Aspen Drive, Whitfield, Dover, Kent, CT16

## Directions

For directions to this property please contact us.







**Wards**  
Helping you move forwards

Call Dover Branch 01304 214876 ■ [wardsofkent.co.uk](http://wardsofkent.co.uk)



- The seller is a person connected with Wards as defined in the Estate Agents Act 1979
- Appliances & services are untested, dimensions are approximate and floor plans are not to scale

- Legal advice should be taken to verify fixtures/fittings, planning, alterations and/or lease details
- Through a Homewise Home For Life Plan people aged 60+ can secure this property for up to 59% less, by purchasing a Lifetime Lease.



10735506/20240328/TE/GM