



**Guide Price**  
**£500,000**

**Freehold**

5x  3x  1x 

**Hamilton Mews, London  
Road, Dover, Kent, CT16**

**OVER 60?**

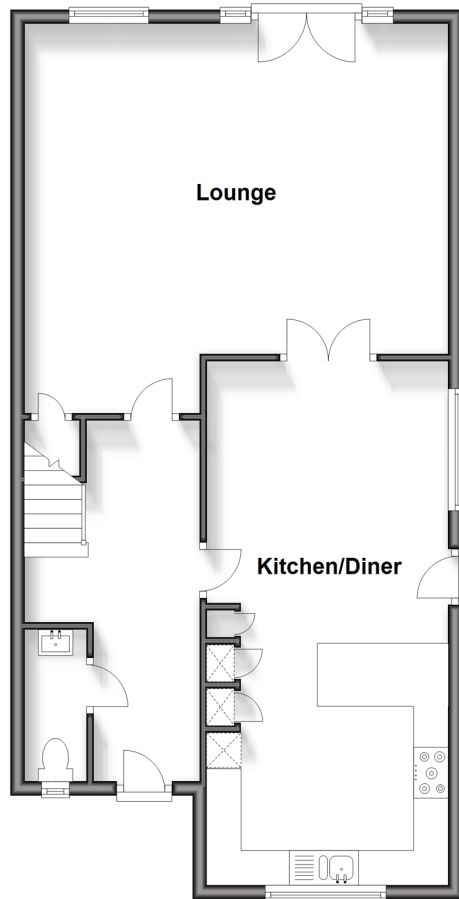
Secure this property  
for up to **59% less!**

*Wards*  
Helping you move forwards



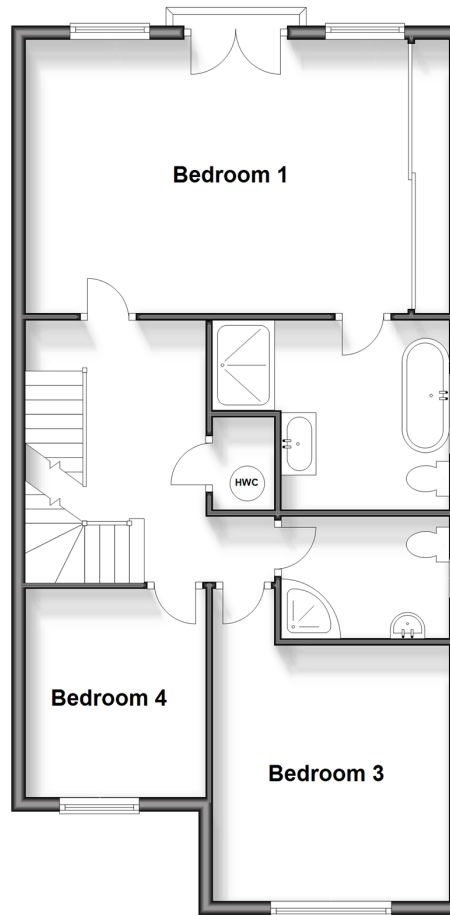
### Ground Floor

Approx. 72.0 sq. metres (774.6 sq. feet)



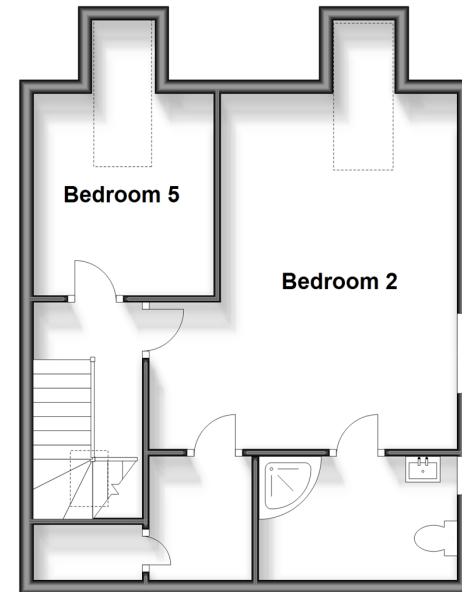
### First Floor

Approx. 72.0 sq. metres (774.6 sq. feet)



### Second Floor

Approx. 44.8 sq. metres (482.0 sq. feet)



## Accommodation

### GROUND FLOOR

Entrance Hallway  
Downstairs Cloakroom  
Kitchen/Diner : 24'8 x 11'4 (7.52m x 3.46m)  
Lounge : 20'2 x 15'6 (6.15m x 4.73m)

### FIRST FLOOR

Landing  
Shower Room  
Bedroom 1 : 18'0 x 12'10 (5.49m x 3.91m)  
En-Suite Bathroom  
Bedroom 3 : 14'7 x 11'5 (4.45m x 3.48m)  
Bedroom 4 : 9'8 x 8'4 (2.95m x 2.54m)

### SECOND FLOOR

Landing  
Bedroom 5 : 13'0 x 8'4 (3.97m x 2.54m)  
Bedroom 2 : 24'4 x 14'6 (7.42m x 4.42m)  
En-Suite Shower Room

### OUTSIDE

Rear Garden  
Garden Shed  
Car Port  
Off Road Parking



## Main features

- Beautiful family house set in the sought after Temple Ewell location
- Ample off-road parking, ideal for when the guests descend
- Immaculately presented throughout, a real turn-key home
- Enclosed rear garden, ideal for children or pets
- A small development of 4 houses, an opportunity to own a unique home



### Nearest Schools

Primary Schools: Temple Ewell C of E Primary 0.4 miles, River Primary 0.6 miles, Green Park Community Primary 1.4 miles  
Secondary Schools: Dover Christchurch Academy 1.8 miles, Dover Grammar School for Girls 1.9 miles.



### Transport Information

Train Stations: Kearsney 0.2 miles, Dover Priory 3.0 miles, Shepherdswell 4.6 miles



### Address

Hamilton Mews, London Road, Dover, Kent, CT16



### Directions

For directions to this property please contact us.





**Wards**  
Helping you move forwards

Call Dover Branch 01304 214876 ■ [wardsofkent.co.uk](http://wardsofkent.co.uk)



■ Legal advice should be taken to verify fixtures/fittings, planning, alterations and/or lease details ■ Appliances & services are untested, dimensions are approximate and floor plans are not to scale  
■ Through a Homewise Home For Life Plan people aged 60+ can secure this property for up to 59% less, by purchasing a Lifetime Lease.



10735518/20240511/TE/GM