



Price
£375,000

Freehold

2x  1x  2x 

**Orchard Close,
Whitfield, Dover, Kent,
CT16**

OVER 60?

Secure this property
for up to **59% less!**

Wards
Helping you move forwards



Main features

- Refurbished family home
- Garage and off road parking
- Quiet cul de sac location in village of Whitfield
- Fantastic transport links with easy access to A256 and A2/M2
- Whitfield village has a selection of takeaway's as well as Post Office and Tesco's is close by

Accommodation

GROUND FLOOR

Entrance Porch

Lounge : 17'11 x 10'8 (5.46m x 3.25m)

Dining Area : 8'5 x 8'2 (2.57m x 2.49m)

Bathroom

Kitchen: 9'0 x 8'7 (2.75m x 2.62m)

Conservatory : 6'4 x 5'10 (1.93m x 1.78m)

Bedroom 2 : 10'9 x 7'10 (3.28m x 2.39m)

Bedroom 1 : 12'8 x 9'4 (3.86m x 2.85m)

OUTSIDE

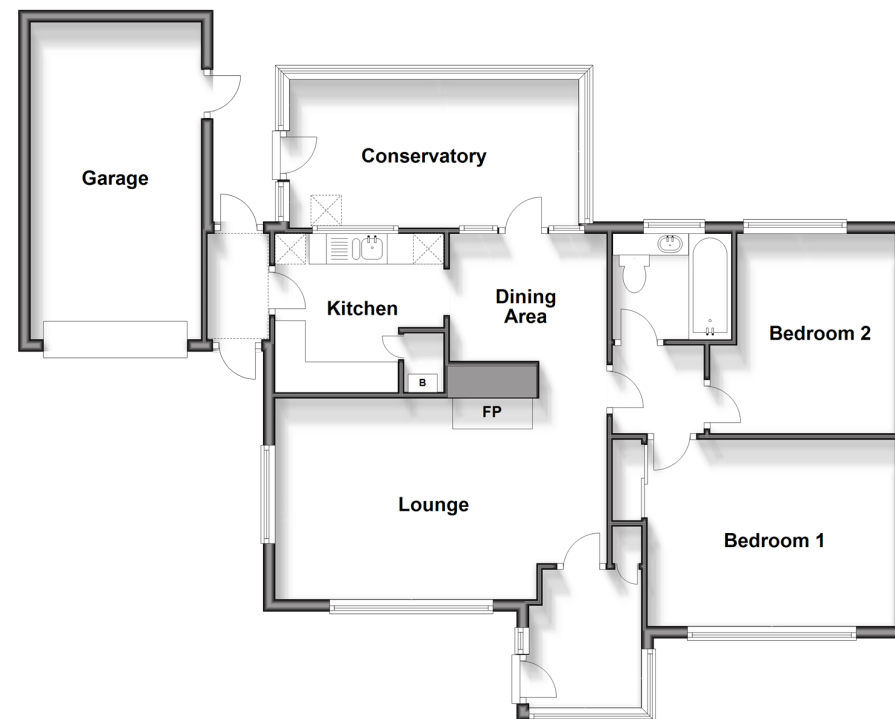
Front Garden

Rear Garden

Off Road Parking

Garage

Ground Floor
Approx. 94.9 sq. metres (1021.4 sq. feet)



Call Dover - 01304 214876 ■ wardsofkent.co.uk

- Legal advice should be taken to verify fixtures/fittings, planning, alterations and/or lease details
- Appliances & services are untested, dimensions are approximate and floor plans are not to scale
- Through a Homewise Home For Life Plan people aged 60+ can secure this property for up to 59% less, by purchasing a Lifetime Lease.



10735527/20240504/TE/OV