



Price
£350,000

Freehold

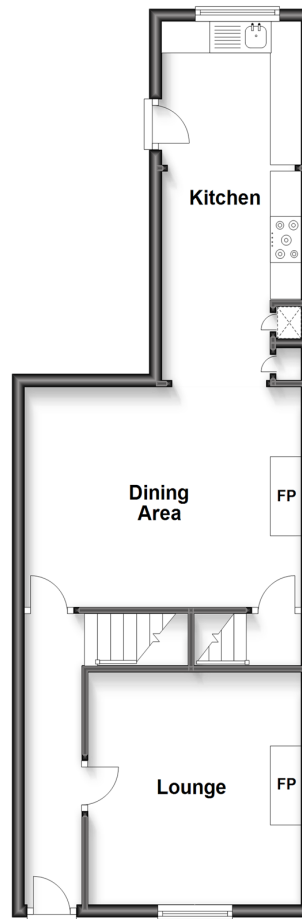
2x  1x  2x 

**St. Mary's Road,
Faversham, Kent, ME13**

Wards
Helping you move forwards

Split Level Ground Floor

Approx. 50.0 sq. metres (538.0 sq. feet)



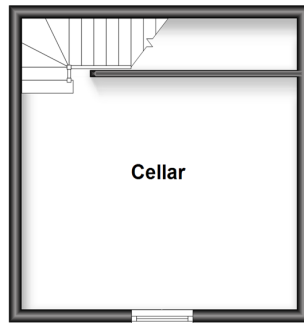
Split Level First Floor

Approx. 44.6 sq. metres (480.2 sq. feet)



Basement

Approx. 20.7 sq. metres (223.1 sq. feet)



Accommodation

GROUND FLOOR

Entrance Hall

Lounge: 12'1 x 11'4 (3.69m x 3.46m)

Dining Area: 14'8 x 11'7 (4.47m x 3.53m)

Kitchen: 18'1 x 7'11 (5.52m x 2.41m)

BASEMENT

Cellar

FIRST FLOOR

Landing

Bedroom 1: 14'9 x 12'2 (4.50m x 3.71m)

Bedroom 2: 14'9 x 11'7 (4.50m x 3.53m)

Bathroom

OUTSIDE

Front Garden

Rear Garden



Main features

- Attractive period property in popular location
- Walking distance to town centre and mainline station
- Separate lounge and dining room
- Recently refurbished to a high standard with newly fitted kitchen
- No chain



Nearest Schools

Primary Schools: St Mary of Charity CE (Aided) Primary 0.3 miles, Ethelbert Road Infant School 0.6 miles

Secondary Schools: Queen Elizabeth's Grammar School 0.6 miles, The Abbey School 0.9 miles



Transport Information

Train Stations: Faversham 0.2 miles, Selling 4.3 miles, Teynham 5.1 miles



Address

St. Mary's Road, Faversham, Kent, ME13



Directions

For directions to this property please contact us.



Call Faversham Branch 01795 535517 ■ wardsofkent.co.uk



■ Legal advice should be taken to verify fixtures/fittings, planning, alterations and/or lease details ■ Appliances & services are untested, dimensions are approximate and floor plans are not to scale



10820714/20240327/JB/PJ