



Price
£280,000

Freehold

1x  1x  2x 

**Victoria Place,
Faversham, Kent, ME13**

OVER 60?

Secure this property
for up to **59% less!**

Wards
Helping you move forwards



Main features

- Attractive Victorian house in the heart of the town
- Accommodation over 3 floors with traditional lounge and separate dining room
- Courtyard garden
- Easy access to mainline station, perfect for commuters
- No onward chain

Accommodation

GROUND FLOOR

Lounge: 11'8 x 10'11 (3.56m x 3.33m)

Dining Room: 12'4 x 11'6 (3.76m x 3.51m)

Kitchen: 13'9 x 6'5 (4.19m x 1.96m)

FIRST FLOOR

Landing

Bedroom 1 : 11'7 x 10'11 (3.53m x 3.33m)

Bathroom

SECOND FLOOR

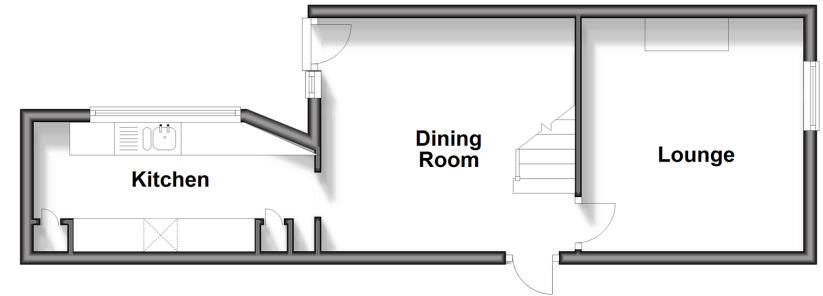
Loft Area: 14'11 x 11'6 (4.55m x 3.51m)

OUTSIDE

Rear Courtyard Garden

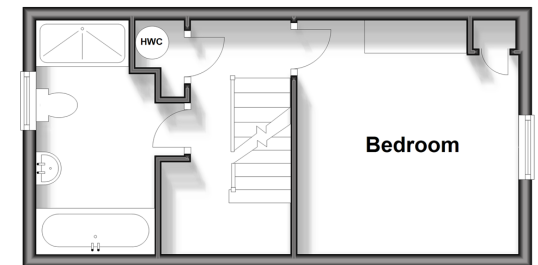
Ground Floor

Approx. 33.9 sq. metres (364.6 sq. feet)



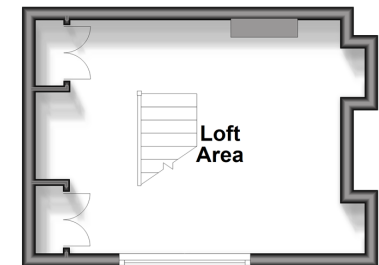
First Floor

Approx. 25.7 sq. metres (276.3 sq. feet)



Second Floor

Approx. 16.8 sq. metres (180.5 sq. feet)



Call Faversham - 01795 535517 ■ wardsofkent.co.uk

- Legal advice should be taken to verify fixtures/fittings, planning, alterations and/or lease details
- Appliances & services are untested, dimensions are approximate and floor plans are not to scale
- Through a Homewise Home For Life Plan people aged 60+ can secure this property for up to 59% less, by purchasing a Lifetime Lease.



10825566/20240410/JB/PJ