



**Price**  
**£365,000**

**Freehold**

3x  1x  2x 

**Finlay Close, Ospringe,  
Faversham, Kent, ME13**

**OVER 60?**

Secure this property  
for up to **59% less!**

*Wards*  
Helping you move forwards





## Main features

- Desirable location
- Easy walking distance to the town centre shops
- Requires some general updating and modernisation
- Well planned accommodation with a separate study/family area
- Corner plot with conservatory and garage

## Accommodation

### GROUND FLOOR

Entrance Porch

Entrance Hall

Cloakroom

Lounge: 17'3 x 13'11 (5.26m x 4.24m)

Study/Family Area: 16'0 x 7'8 (4.88m x 2.34m)

Kitchen: 14'0 x 9'0 (4.27m x 2.75m)

Conservatory

### FIRST FLOOR

Landing

Bedroom 1: 14'9 x 9'0 (4.50m x 2.75m)

Bedroom 2: 11'3 x 9'9 (3.43m x 2.97m)

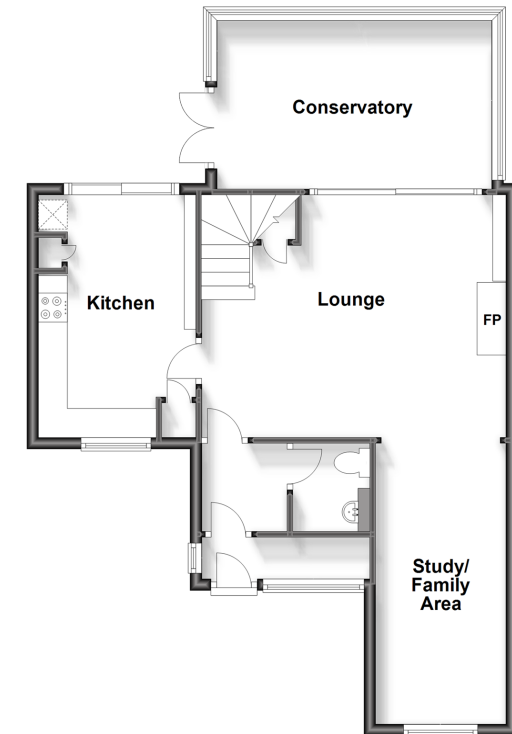
Bedroom 3: 11'2 x 8'2 maximum (3.41m x 2.49m)

Bathroom

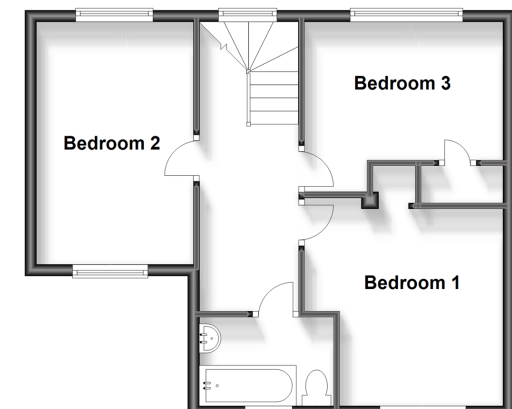
### OUTSIDE

Corner plot with gardens to  
Front, Side & Rear

**Ground Floor**  
Approx. 66.5 sq. metres (715.9 sq. feet)



**First Floor**  
Approx. 46.6 sq. metres (501.6 sq. feet)



**Call Faversham - 01795 535517 ■ [wardsofkent.co.uk](http://wardsofkent.co.uk)**

- Legal advice should be taken to verify fixtures/fittings, planning, alterations and/or lease details
- Appliances & services are untested, dimensions are approximate and floor plans are not to scale
- Through a Homewise Home For Life Plan people aged 60+ can secure this property for up to 59% less, by purchasing a Lifetime Lease.



10825681/20230801/PJ/PJ