

**OVER 60?**

Secure this property  
for up to **59% less!**



Video Tour available

**Price**

**£875,000**

**Freehold**

7x  5x  3x 

School Lane, Boughton-Under-Blean,  
Faversham, Kent, ME13

*Wards*  
Helping you move forwards

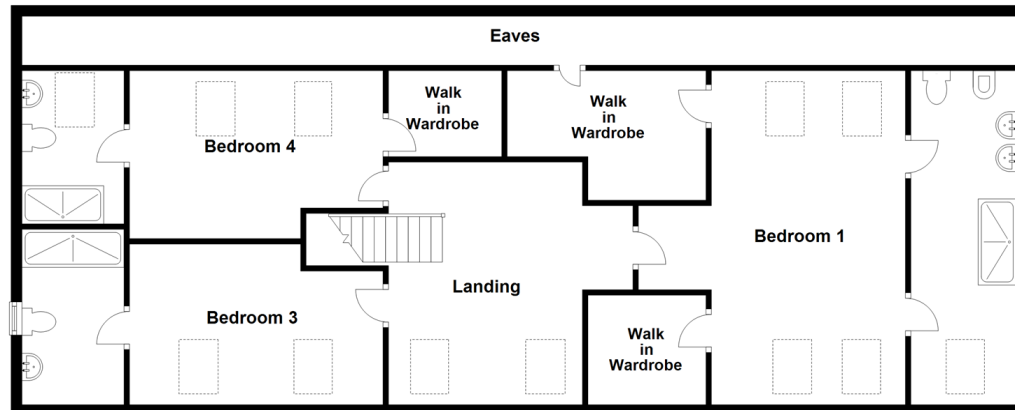
### Ground Floor

Approx. 186.5 sq. metres (2007.9 sq. feet)



### First Floor

Approx. 130.0 sq. metres (1398.8 sq. feet)



## Accommodation

### GROUND FLOOR

Entrance Hall: 34'7 x 16'11 (10.55m x 5.16m)

Lounge: 19'4 x 16'2 (5.90m x 4.93m)

Kitchen: 14'0 x 9'8 (4.27m x 2.95m)

Dining Area: 17'0 x 13'7 (5.19m x 4.14m)

Study: 12'7 x 10'1 (3.84m x 3.08m)

Utility Room: 9'8 x 7'11 (2.95m x 2.41m)

Bedroom 6: 12'7 x 9'10 (3.84m x 3.00m)

Bedroom 5: 10'2 x 9'8 (3.10m x 2.95m)

Bathroom

Bedroom 2: 14'7 x 10'4 (4.45m x 3.15m)

En-suite Bathroom

Bedroom 7/Snug: 9'9 x 9'1 (2.97m x 2.77m)

Cloakroom

### FIRST FLOOR

Landing

Bedroom 1: 20'1 x 16'2 (6.13m x 4.93m)

Walk-in Wardrobe 1: 7'6 x 7'2 (2.29m x 2.19m)

Walk-in Wardrobe 2: 12'0 x 7'9 (3.66m x 2.36m)

En-suite Shower Room: 20'0 x 6'6 (6.10m x 1.98m)

Bedroom 4: 15'3 x 9'9 (4.65m x 2.97m)

Walk-in Wardrobe 3: 7'0 x 4'9 (2.14m x 1.45m)

En-suite Shower Room

Bedroom 3: 15'3 x 9'10 (4.65m x 3.00m)

En-suite Shower Room

### OUTSIDE

Front Garden

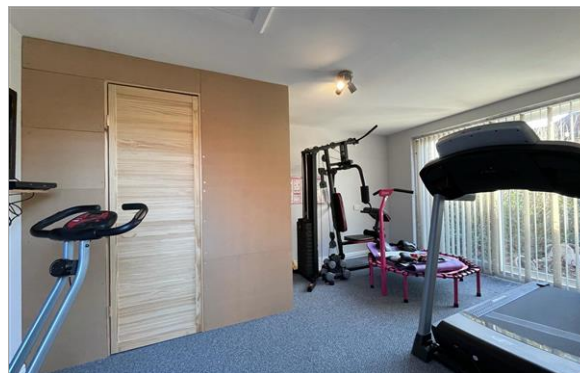
Rear Garden

Double Garage

Driveway

Workshop/Outbuildings





## Main features

- Stunning 7 bedroom detached Home
- Adaptable accommodation with scope for an annexe
- 4 en-suites, office and a gym
- Large, colourful gardens perfect for children and keen gardeners
- Substantial parking for numerous cars, boats or motorhomes



### Nearest Schools

Primary Schools: Boughton-under-Blean and Dunkirk Primary 0.0 miles, Hernhill C of E Primary 1.3 miles

Secondary Schools: Queen Elizabeth's Grammar School 2.7 miles, The Abbey School 2.9 miles



### Transport Information

Train Stations: Selling 2.5 miles, Faversham 3.4 miles, Chilham 3.7 miles



### Address

School Lane, Boughton-Under-Blean, Faversham, Kent, ME13



### Directions

For directions to this property please contact us.





**Wards**  
Helping you move forwards

Call Faversham Branch 01795 535517 ■ [wardsofkent.co.uk](http://wardsofkent.co.uk)



- Legal advice should be taken to verify fixtures/fittings, planning, alterations and/or lease details
- Appliances & services are untested, dimensions are approximate and floor plans are not to scale
- Through a Homewise Home For Life Plan people aged 60+ can secure this property for up to 59% less, by purchasing a Lifetime Lease.



10829234/20230914/MW/PJ