



Guide Price
£395,000

Freehold

3x  1x  2x 

**London Road, Teynham,
Sittingbourne, Kent,
ME9**

OVER 60?

Secure this property
for up to **59% less!**

Wards
Helping you move forwards



Main features

- Substantial, extended detached bungalow
- Set back from the road on a good sized plot with lovely rear garden
- Spacious lounge and kitchen/dining area
- Village location nestled between Faversham & Sittingbourne
- Local shops and station nearby

Accommodation

GROUND FLOOR

Entrance Hall

Lounge: 24'3 x 11'11 (7.40m x 3.63m)

Kitchen/Dining Area: 19'3 x 11'10 (5.87m x 3.61m)

Bedroom 1: 14'1 into bay x 14'0 (4.30m x 4.27m)

Bedroom 2: 12'0 x 9'11 (3.66m x 3.02m)

Bedroom 3: 11'11 x 7'8 (3.63m x 2.34m)

Inner Hall

Rear Lobby

Shower Room

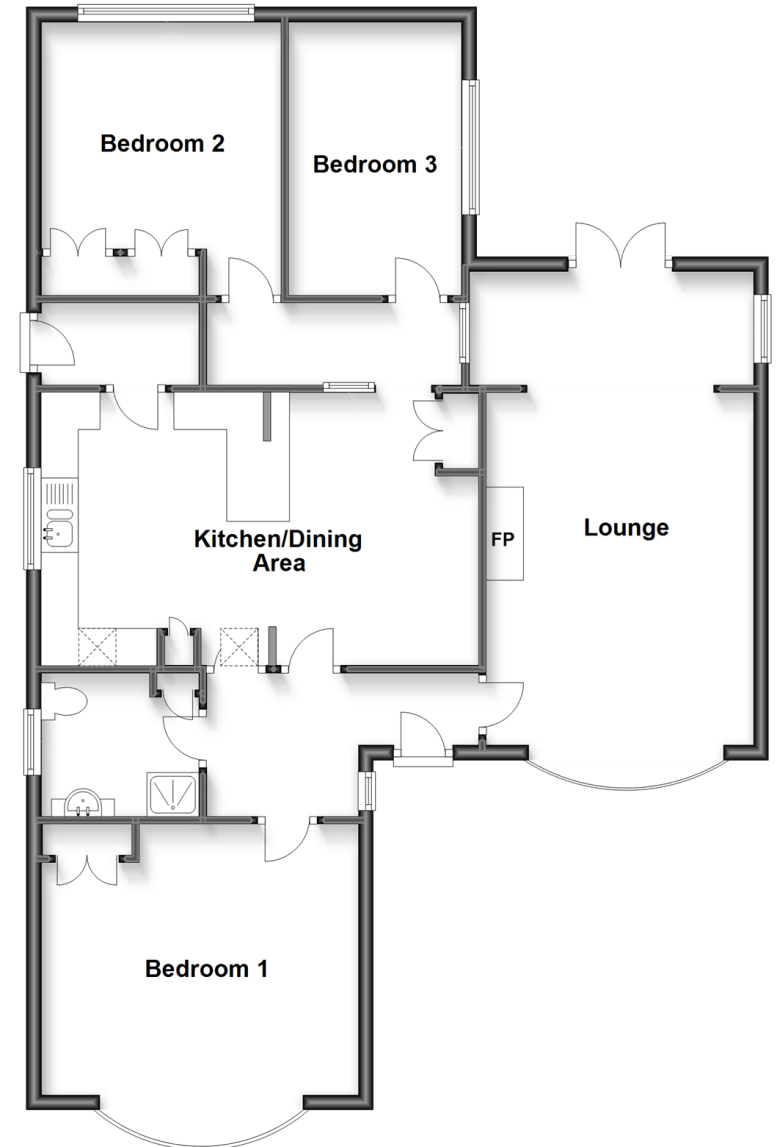
OUTSIDE

Front Garden

Rear Garden

Off road parking for 2 cars

Ground Floor
Approx. 100.9 sq. metres (1086.5 sq. feet)



Call Faversham - 01795 535517 ■ wardsof Kent.co.uk

- Legal advice should be taken to verify fixtures/fittings, planning, alterations and/or lease details
- Appliances & services are untested, dimensions are approximate and floor plans are not to scale
- Through a Homewise Home For Life Plan people aged 60+ can secure this property for up to 59% less, by purchasing a Lifetime Lease.



10829872/20230801/PJ/PJ