



**OVER 60?**

You could get up to  
**59% off** the price!\*

**Price**  
**£350,000**

**Freehold**

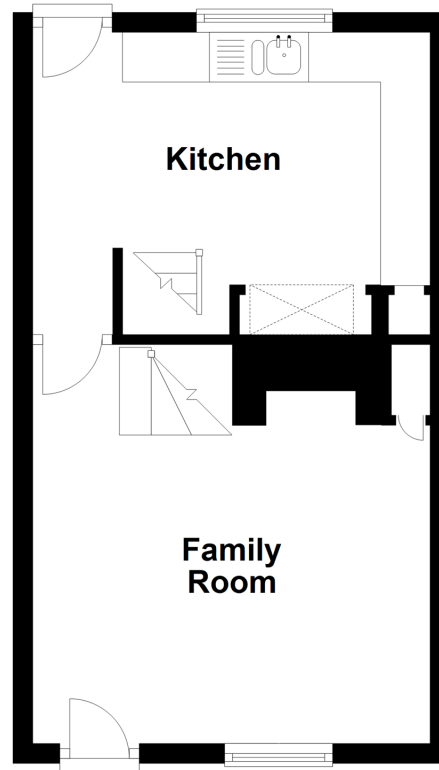
2x  1x  2x 

**West Street, Faversham,  
Kent, ME13**

*Wards*  
Helping you move forwards

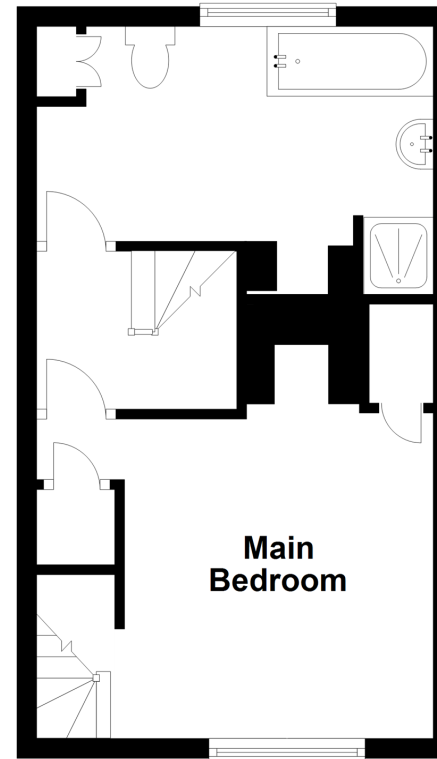
## Split Level Ground Floor

Approx. 28.6 sq. metres (308.0 sq. feet)



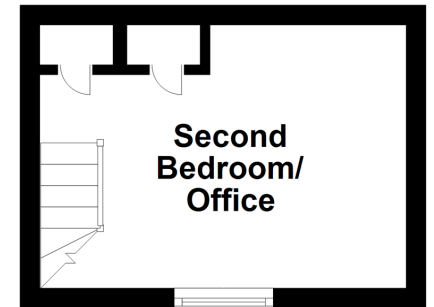
## Split Level First Floor

Approx. 28.6 sq. metres (308.0 sq. feet)



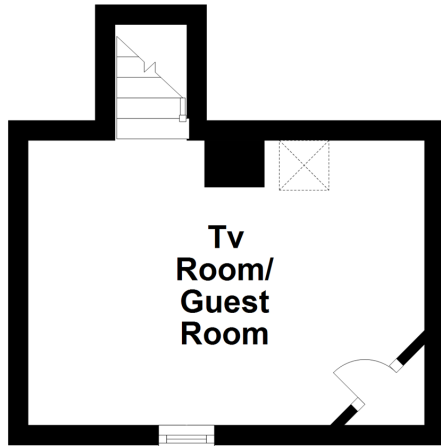
## Second Floor

Approx. 9.8 sq. metres (105.3 sq. feet)



## Basement

Approx. 12.3 sq. metres (132.4 sq. feet)



## Accommodation

### BASEMENT

TV/Guest Room

### GROUND FLOOR

Family Room: 13'0 x 11'0 (3.97m x 3.36m)

Kitchen: 11'0 x 7'5 (3.36m x 2.26m)

### FIRST FLOOR

Landing

Main Bedroom: 11'0 x 9'4 (3.36m x 2.85m)

Bathroom: 10'8 x 7'1 (3.25m x 2.16m)

### SECOND FLOOR

Second Bedroom/Office

### OUTSIDE

Rear Garden





## Main features

- 2 bedroom Grade 2 listed period cottage
- Conservation area
- Desired location within walking distance to town centre and station
- Many original features
- Private car parking to rear of property offered on a first come first served basis application through the local authority



### Nearest Schools

Primary Schools: Davington Primary 0.3 miles, St Mary of Charity CE (Aided) Primary 0.4 miles, Ethelbert Road Infant School 0.4 miles

Secondary Schools: Queen Elizabeth's Grammar School



### Transport Information

Train Stations: Faversham 0.3 miles, Selling 3.5 miles, Teynham 3.5 miles



### Address

West Street, Faversham, Kent, ME13



### Directions

For directions to this property please contact us.





**Wards**  
Helping you move forwards

Call Faversham Branch 01795 535517 ■ [wardsofkent.co.uk](http://wardsofkent.co.uk)



- Legal advice should be taken to verify fixtures/fittings, planning, alterations and/or lease details
- Appliances & services are untested, dimensions are approximate and floor plans are not to scale
- Our Homewise partnership offer a 'Home for Life' plan to buyers over 60, granting a lifetime lease for your protection and reducing the purchase price by up to 59%



10830659/20220525/PJ/PJ