



OVER 60?

Secure this property
for up to **59% less!**

Guide Price

£275,000

Freehold

3x  1x  2x 

**Plantation Road,
Faversham, Kent, ME13**

Wards
Helping you move forwards



Main features

- Attractive terrace house in popular location
- Walking distance to the shops and mainline station
- Lounge plus separate dining room
- Useful cellar
- Enclosed gardens

Accommodation

GROUND FLOOR

Lounge: 12'0 x 12'0 (3.66m x 3.66m)
 Dining Room: 12'0 x 10'7 (3.66m x 3.23m)
 Kitchen: 9'11 x 6'2 (3.02m x 1.88m)
 Lobby
 Shower Room

BASEMENT

Cellar: 13'3 x 11'10 (4.04m x 3.61m)

FIRST FLOOR

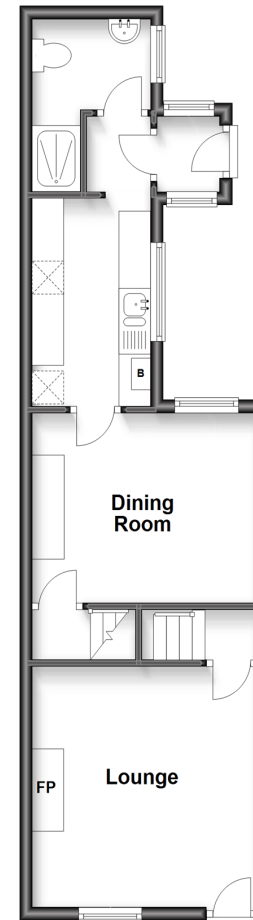
Landing
 Bedroom 1: 12'0 x 12'0 (3.66m x 3.66m)
 Bedroom 2: 11'11 x 10'4 (3.63m x 3.15m)
 Bedroom 3: 9'11 x 6'2 (3.02m x 1.88m)

OUTSIDE

Rear Garden

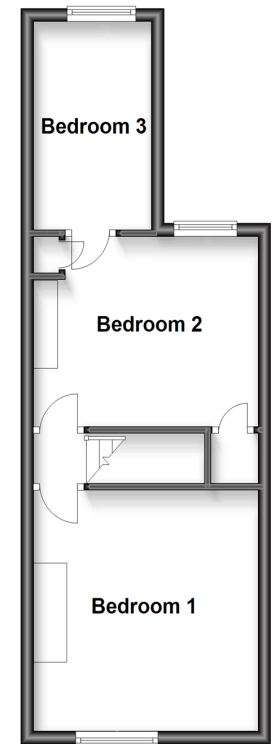
Ground Floor

Approx. 39.3 sq. metres (423.1 sq. feet)



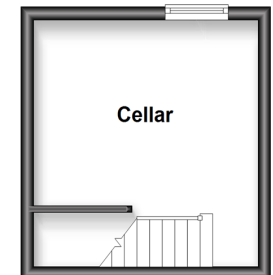
Split Level First Floor

Approx. 32.9 sq. metres (354.5 sq. feet)



Basement

Approx. 13.4 sq. metres (144.2 sq. feet)



Call Faversham - 01795 535517 ■ wardsofkent.co.uk

- Legal advice should be taken to verify fixtures/fittings, planning, alterations and/or lease details
- Appliances & services are untested, dimensions are approximate and floor plans are not to scale
- Through a Homewise Home For Life Plan people aged 60+ can secure this property for up to 59% less, by purchasing a Lifetime Lease.