



Price
£425,000
Freehold

3x  2x  2x 

Willement Road, Faversham, Kent, ME13

Wards
Helping you move forwards

Accommodation

GROUND FLOOR

Entrance Hall

Lounge: 11'6 x 11'4 (3.51m x 3.46m)

Dining Area: 17'7 x 11'4 (5.36m x 3.46m)

Kitchen: 10'8 x 8'3 (3.25m x 2.52m)

Bathroom

Bedroom 3: 10'9 x 8'3 (3.28m x 2.52m)

FIRST FLOOR

Landing

Bedroom 1: 21'3 x 8'10 (6.48m x 2.69m)

Bedroom 2: 21'2 x 11'1 maximum (6.46m x 3.38m)

Shower Room

OUTSIDE

Front Garden

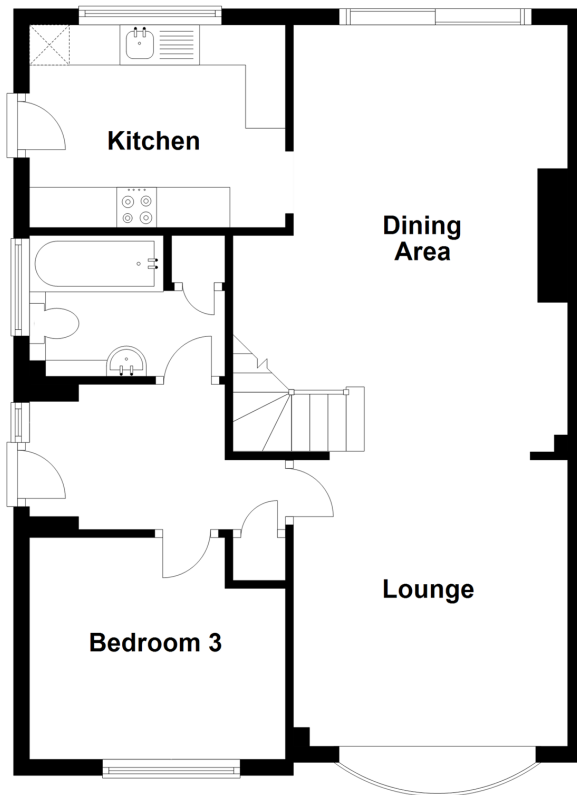
Off Road Parking

Garage

Rear Garden

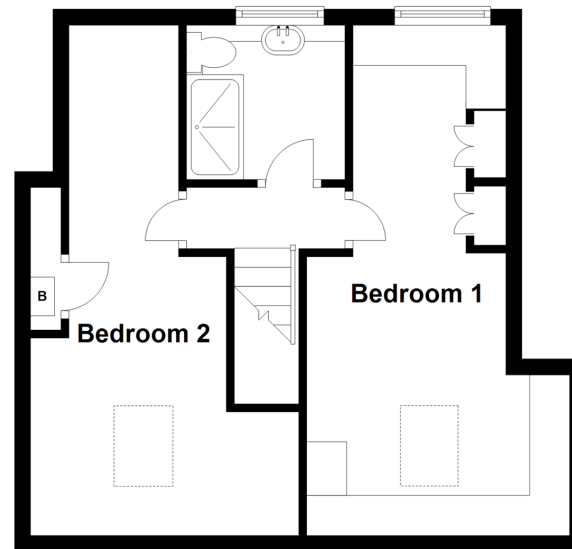
Ground Floor

Approx. 61.4 sq. metres (661.3 sq. feet)



First Floor

Approx. 38.4 sq. metres (413.3 sq. feet)





Main features

- Immaculate chalet style bungalow with great living space
- 3 bedrooms arranged over 2 floors
- Sought after location close to the local cricket ground
- Parking for 3 cars
- Established colourful garden with large deck to relax on



Nearest Schools

Primary Schools: Bysing Wood Primary 0.2 miles, Davington Primary 0.4 miles, Ethelbert Road Infant School 0.4 miles

Secondary Schools: The Abbey School 0.7 miles, Queen



Transport Information

Train Stations: Faversham 0.6 miles, Teynham 3.2 miles, Selling 3.8 miles



Address

Willement Road, Faversham, Kent, ME13



Directions

For directions to this property please contact us.



Wards
Helping you move forwards

Call Faversham Branch 01795 535517 ■ wardsofkent.co.uk



■ Legal advice should be taken to verify fixtures/fittings, planning, alterations and/or lease details ■ Appliances & services are untested, dimensions are approximate and floor plans are not to scale



10831338/20220606/JB/PJ