



**Price**  
**£335,000**

**Freehold**

3x  2x  3x 

**Ospringe Street,  
Faversham, Kent, ME13**

**OVER 60?**

Secure this property  
for up to **59% less!**

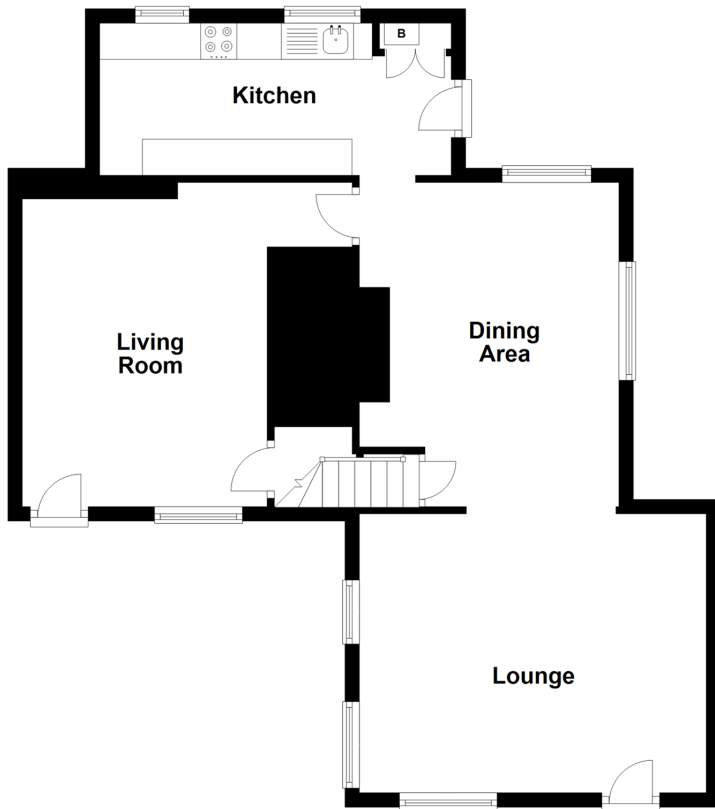


**Video Tour available**

**Wards**  
Helping you move forwards

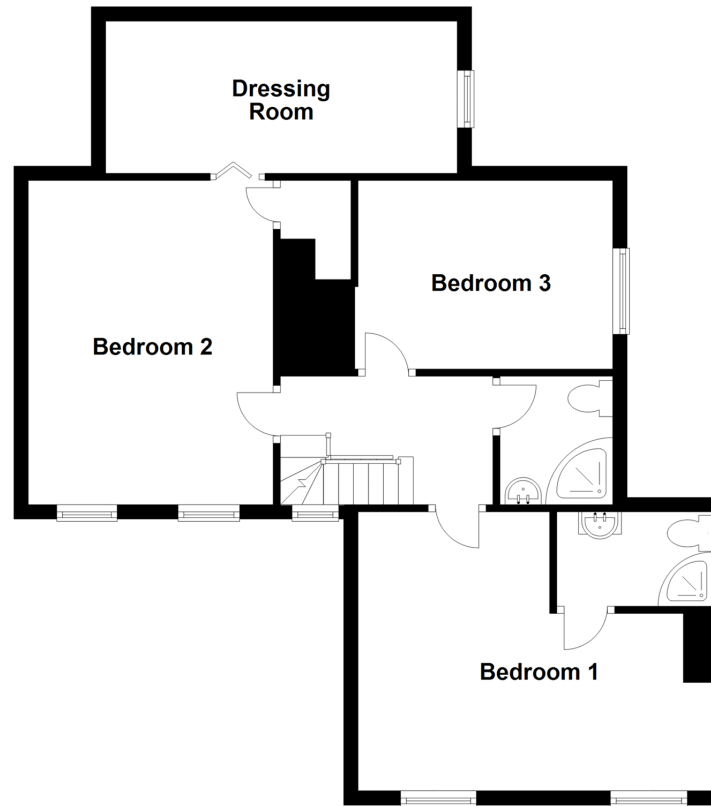
### Split Level Ground Floor

Approx. 66.7 sq. metres (717.7 sq. feet)



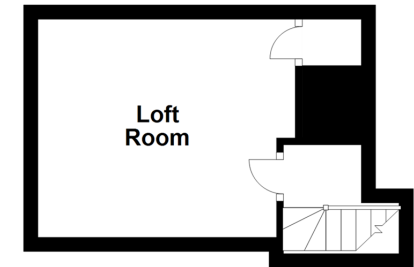
### First Floor

Approx. 66.3 sq. metres (713.7 sq. feet)



### Second Floor

Approx. 14.1 sq. metres (151.4 sq. feet)



## Accommodation

### SPLIT LEVEL GROUND FLOOR

Lounge: 15'10 x 12'7 (4.83m x 3.84m)

Dining Area : 14'1 x 11'8 (4.30m x 3.56m)

Living Room: 14'2 x 11'6 (4.32m x 3.51m)

Kitchen: 16'3 x 7'0 (4.96m x 2.14m)

### FIRST FLOOR

Landing

Bedroom 1: 16'1 maximum x 14'0 (4.91m x 4.27m)

En suite Shower Room

Bedroom 2: 14'5 x 11'4 (4.40m x 3.46m)

Dressing Room: 15'10 x 7'0 (4.83m x 2.14m)

Bedroom 3: 11'4 x 7'11 (3.46m x 2.41m)

Shower Room

### SECOND FLOOR

Landing

Loft Room: 11'7 x 10'0 (3.53m x 3.05m)

### OUTSIDE

Rear Garden

Allocated Parking





## Main features

- Period cottage with versatile living space
- Completely refurbished throughout, ready to move into
- Loft room/Office, dressing room and cellar
- Fastline to London via train, perfect for commuters
- Easy to maintain secure garden and allocated parking



### Nearest Schools

Primary Schools: Ospringe C of E Primary 0.1 miles, Ethelbert Road Infant School 0.5 miles, Luddenham School 1.1 miles

Secondary Schools: The Abbey School 0.7 miles, Queen



### Transport Information

Train Stations: Faversham 1.1 miles, Teynham 3.8 miles, Selling 4.3 miles



### Address

Ospringe Street, Faversham, Kent, ME13



### Directions

For directions to this property please contact us.



Call Faversham Branch 01795 535517 ■ [wardsofkent.co.uk](http://wardsofkent.co.uk)



■ Legal advice should be taken to verify fixtures/fittings, planning, alterations and/or lease details ■ Appliances & services are untested, dimensions are approximate and floor plans are not to scale  
■ Through a Homewise Home For Life Plan people aged 60+ can secure this property for up to 59% less, by purchasing a Lifetime Lease.



10831462/20220712/PJ/PJ