



OVER 60?

Secure this property
for up to **59% less!**

Price
£395,000

Freehold

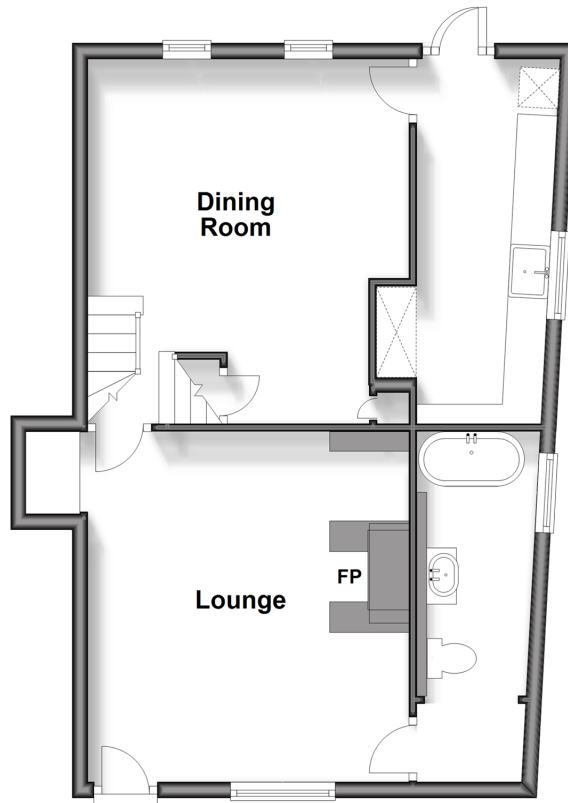
3x  2x  2x 

**The Street, Boughton,
Nr Faversham, Kent,
ME13**

Wards
Helping you move forwards

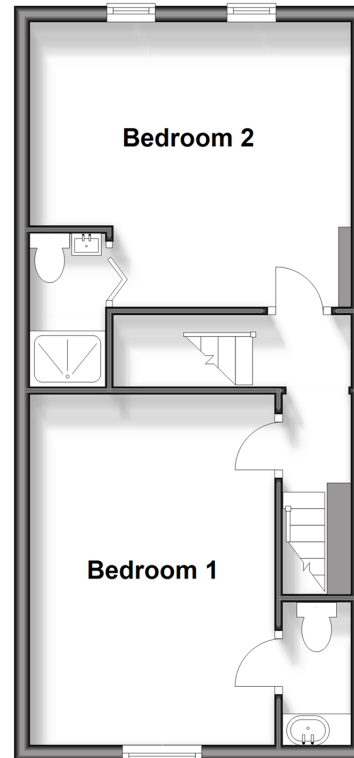
Split Level Ground Floor

Approx. 52.7 sq. metres (566.9 sq. feet)



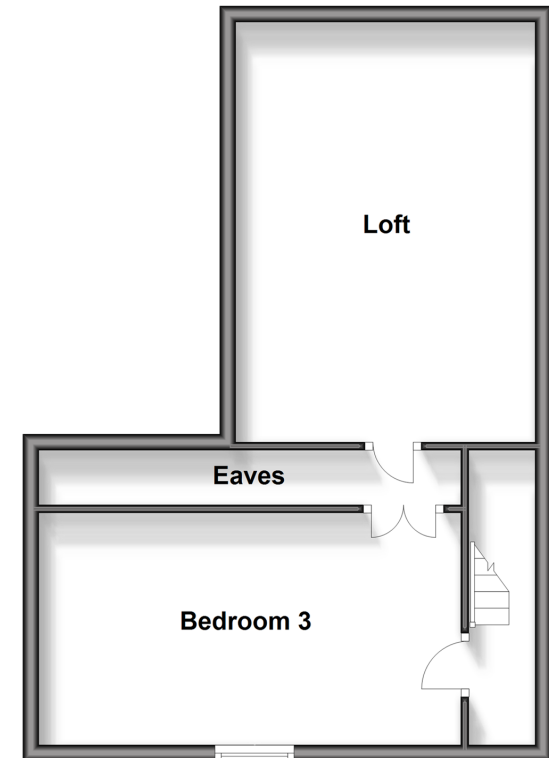
First Floor

Approx. 36.8 sq. metres (395.7 sq. feet)



Second Floor

Approx. 43.6 sq. metres (468.8 sq. feet)



Accommodation

GROUND FLOOR

Lounge: 14'1 x 12'11 (4.30m x 3.94m)

Dining Room: 14'0 x 12'10 (4.27m x 3.91m)

Kitchen: 15'0 x 5'5 (4.58m x 1.65m)

Bathroom

FIRST FLOOR

Landing

Bedroom 1 : 14'2 x 11'0 (4.32m x 3.36m)

En-suite Cloakroom

Bedroom 2 : 12'10 x 10'10 (3.91m x 3.30m)

En-suite Shower Room

SECOND FLOOR

Bedroom 3 : 16'8 x 9'2 (5.08m x 2.80m)

OUTSIDE

Rear Garden



Main features

- Grade II listed cottage in delightful village location
- Renovated and refurbished throughout by current owners in recent years
- Split level ground floor accommodation with a separate dining room and lounge
- Lovely manageable garden to the rear
- Village amenities including post office, primary school and village store



Nearest Schools

Primary Schools: Boughton-under-Blean and Dunkirk Primary 0.1 miles, Hernhill C of E Primary 1.8 miles

Secondary Schools: The Abbey School 3.2 miles, Queen Elizabeth's Grammar School 3.7 miles



Transport Information

Train Stations: Selling 2.4 miles, Faversham 3.5 miles, Chilham 5.0 miles



Address

The Street, Boughton, Nr Faversham, Kent, ME13



Directions

For directions to this property please contact us.



Wards
Helping you move forwards

Call Faversham Branch 01795 535517 ■ wardsofkent.co.uk



■ Legal advice should be taken to verify fixtures/fittings, planning, alterations and/or lease details ■ Appliances & services are untested, dimensions are approximate and floor plans are not to scale
■ Through a Homewise Home For Life Plan people aged 60+ can secure this property for up to 59% less, by purchasing a Lifetime Lease.



10831507/20240207/JB/PJ