



**Price**  
**£315,000**

**Freehold**

2x  1x  1x 

**Tettenhall Way,  
Faversham, Kent, ME13**

**OVER 60?**

Secure this property  
for up to **59% less!**

*Wards*  
Helping you move forwards





## Main features

- Immaculate house on a popular new development
- Well presented interior and landscaped garden
- Perfect for first time buyers or family home
- National supermarket nearby
- Easy reach to Faversham town centre and mainline station

## Accommodation

### GROUND FLOOR

Entrance Hall

Cloakroom

Lounge: 12'8 x 11'7 (3.86m x 3.53m)

Kitchen/Diner: 14'7 x 9'3 (4.45m x 2.82m)

### FIRST FLOOR

Landing

Bedroom 1: 11'6 x 11'1 (3.51m x 3.38m)

Bedroom 2: 11'2 x 8'3 (3.41m x 2.52m)

Bathroom

### OUTSIDE

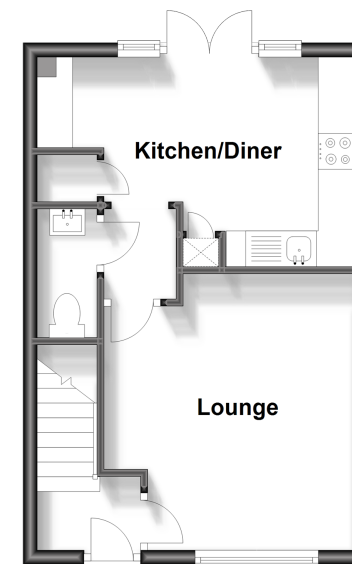
Front Garden

Rear Garden

Driveway for 2 cars

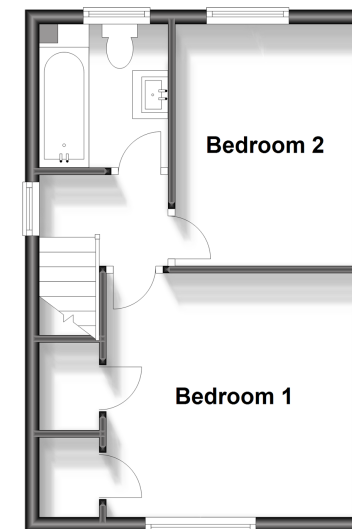
### Ground Floor

Approx. 30.8 sq. metres (331.6 sq. feet)



### First Floor

Approx. 30.8 sq. metres (331.6 sq. feet)



**Call Faversham - 01795 535517 ■ [wardsofkent.co.uk](http://wardsofkent.co.uk)**

- Legal advice should be taken to verify fixtures/fittings, planning, alterations and/or lease details
- Appliances & services are untested, dimensions are approximate and floor plans are not to scale
- Through a Homewise Home For Life Plan people aged 60+ can secure this property for up to 59% less, by purchasing a Lifetime Lease.



10831555/20240126/PJ/PJ