



**Price**  
**£315,000**

**Freehold**

2x  1x  1x 

**Johnson Court,  
Faversham, Kent, ME13**

**OVER 60?**

Secure this property  
for up to **59% less!**

*Wards*  
Helping you move forwards



## Main features

- Immaculate bungalow in quiet cul de sac
- Close to local bus routes and local supermarket
- Easy reach of delightful walks and nature reserve
- Generous garden to relax and enjoy in this peaceful location
- Off road parking

## Accommodation

### GROUND FLOOR

Entrance Hall

Lounge/Diner: 16'10 x 11'10 (5.13m x 3.61m)

Kitchen: 10'0 x 8'0 (3.05m x 2.44m)

Bedroom 1: 12'0 x 10'10 (3.66m x 3.30m)

Bedroom 2: 10'1 x 7'11 (3.08m x 2.41m)

Shower Room

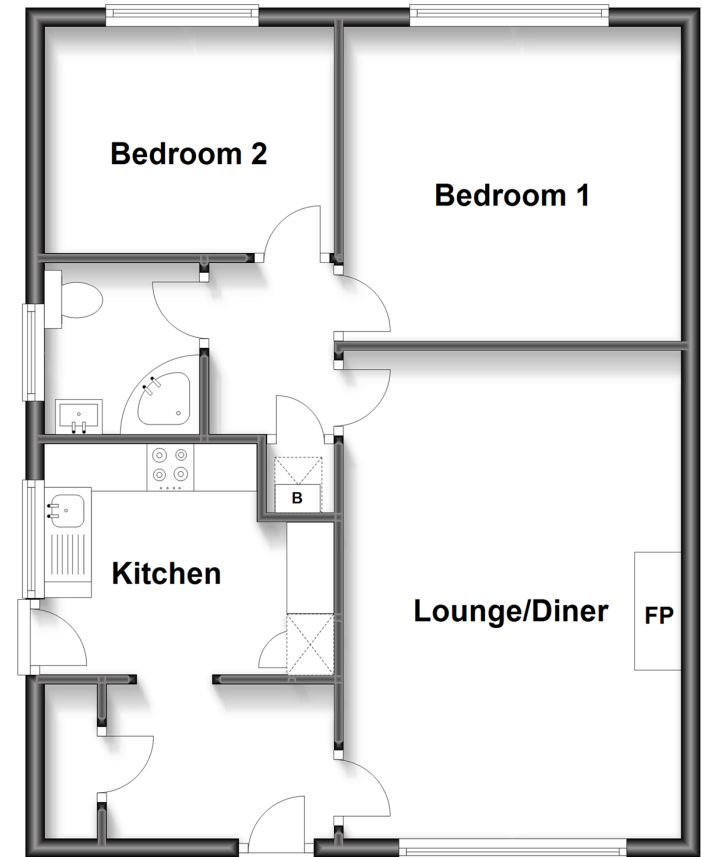
### OUTSIDE

Front Garden

Rear Garden

## Ground Floor

Approx. 58.3 sq. metres (627.6 sq. feet)



**Call Faversham - 01795 535517 ■ [wardsofkent.co.uk](http://wardsofkent.co.uk)**

- The seller is a person connected with Wards as defined in the Estate Agents Act 1979
- Legal advice should be taken to verify fixtures/fittings, planning, alterations and/or lease details
- Appliances & services are untested, dimensions are approximate and floor plans are not to scale
- Through a Homewise Home For Life Plan people aged 60+ can secure this property for up to 59% less, by purchasing a Lifetime Lease.



10831600/20240508/PJ/PJ