



Price
£425,000

Freehold

3x  1x  1x 

**Bysing Wood Road,
Faversham, Kent, ME13**

OVER 60?

You could get up to
59% off the price!*



Video Tour available

Wards
Helping you move forwards



Main features

- Deceptively spacious 3 bedroom detached bungalow
- Well cared for throughout
- Envious corner plot with parking for numerous vehicles
- Easy access to town centre and walking distance to supermarket
- Oare creek and popular gastro pub nearby

Accommodation

GROUND FLOOR

Entrance Porch

Entrance Hall

Lounge/Diner: 20'11 x 11'6 (6.38m x 3.51m)

Kitchen: 11'7 x 7'5 (3.53m x 2.26m)

Garden Room: 11'3 x 9'7 (3.43m x 2.92m)

Bedroom 1: 13'5 x 11'5 (4.09m x 3.48m)

Bedroom 2: 11'6 x 7'10 (3.51m x 2.39m)

Bedroom 3: 8'3 x 6'11 (2.52m x 2.11m)

Bathroom

OUTSIDE

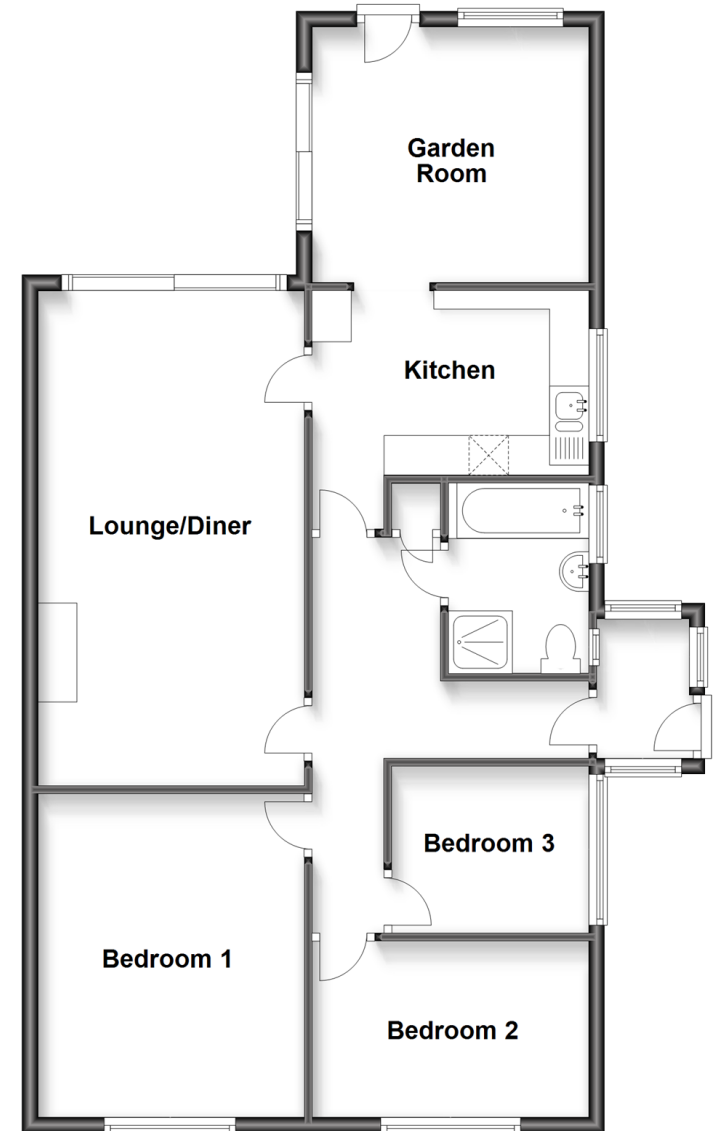
Front and Rear Garden

Garage

Parking for several vehicles

Ground Floor

Approx. 87.3 sq. metres (940.2 sq. feet)



Call Faversham - 01795 535517 ■ wardsof Kent.co.uk

- Legal advice should be taken to verify fixtures/fittings, planning, alterations and/or lease details
- Appliances & services are untested, dimensions are approximate and floor plans are not to scale
- Our Homewise partnership offer a 'Home for Life' plan to buyers over 60, granting a lifetime lease for your protection and reducing the purchase price by up to 59%



10831614/20221021/PJ/PJ