



Price
£620,000

Freehold

4x  2x  4x 

**Holly Tree Cottage,
Staple Street, Hernhill,
Faversham, Kent, ME13**

OVER 60?

Secure this property
for up to **59% less!**



Video Tour available

Wards
Helping you move forwards



Main features

- **Pretty Grade II Listed cottage tucked away in delightful village setting**
- **Large plot with lovely views across paddocks and open countryside**
- **Suitable accommodation for 2 families**
- **Off road parking for numerous vehicles**
- **Perfect country retreat**

Accommodation

GROUND FLOOR

Lounge: 12'1 x 11'7 (3.69m x 3.53m)
 Sitting Room: 12'0 x 11'8 (3.66m x 3.56m)
 Dining Room: 12'0 x 9'1 (3.66m x 2.77m)
 Family Room: 11'11 x 8'11 (3.63m x 2.72m)
 Kitchen: 14'4 x 7'1 (4.37m x 2.16m)
 Kitchen: 11'11 x 7'5 (3.63m x 2.26m)
 Garden Room: 13'3 x 9'2 (4.04m x 2.80m)
 Bathroom
 Shower Room

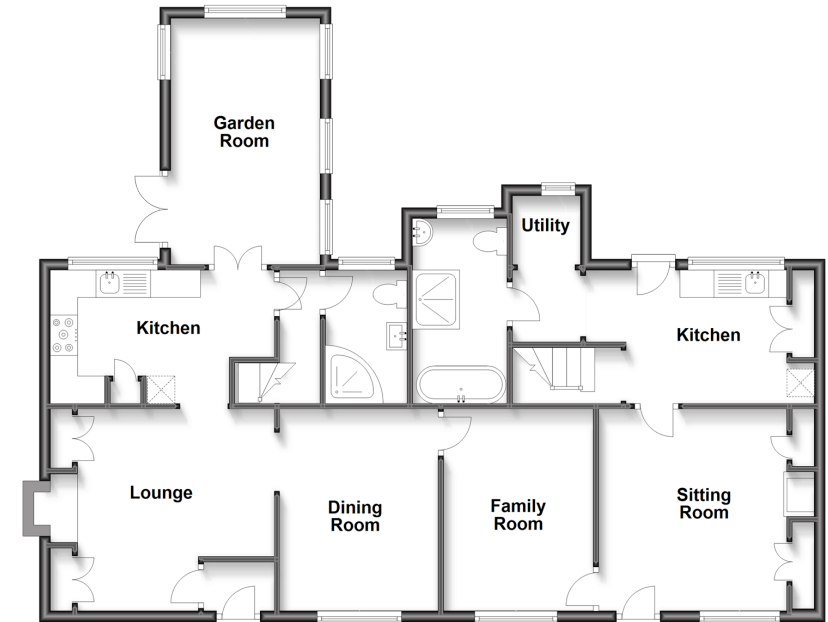
FIRST FLOOR

Landing
 Bedroom 1: 12'6 x 11'8 (3.81m x 3.56m)
 Bedroom 2: 12'6 x 9'8 (3.81m x 2.95m)
 Bedroom 3: 12'5 x 11'8 (3.79m x 3.56m)
 Bedroom 4: 12'6 x 9'0 (3.81m x 2.75m)

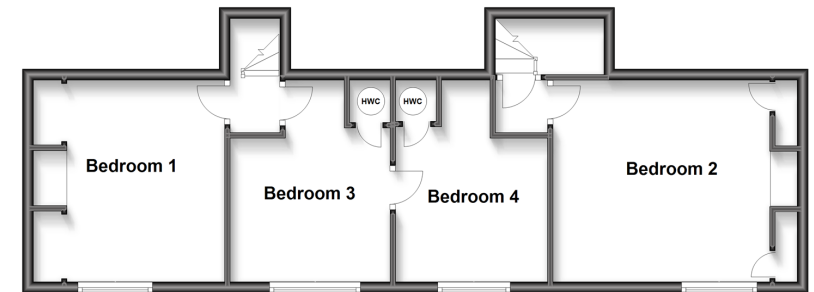
OUTSIDE

Large Rear Garden
 Parking for numerous vehicles

Ground Floor
 Approx. 102.3 sq. metres (1101.4 sq. feet)

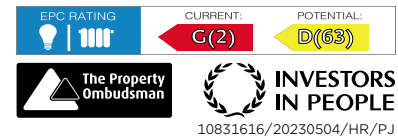


First Floor
 Approx. 54.4 sq. metres (585.3 sq. feet)



Call Faversham - 01795 535517 ■ wardsofkent.co.uk

- If buying to let, the energy rating will need to be improved to at least 'E' rating before you can let the property
- Legal advice should be taken to verify fixtures/fittings, planning, alterations and/or lease details
- Appliances & services are untested, dimensions are approximate and floor plans are not to scale
- Through a Homewise Home For Life Plan people aged 60+ can secure this property for up to 59% less, by purchasing a Lifetime Lease.



10831616/20230504/HR/PJ