



Price
£160,000

Leasehold

1x  1x  1x 

**William Gibbs Court,
Orchard Place,
Faversham, Kent, ME13**

OVER 60?

Secure this property
for up to **59% less!**

Wards
Helping you move forwards



Main features

- Secure retirement flat in Grade II listed former school
- Care line call system
- Just a short walk to shops, park, bus stop & station
- Facilities including residents lounge, laundry room & residents parking
- Over 55's only and no onward chain

Accommodation

SECOND FLOOR

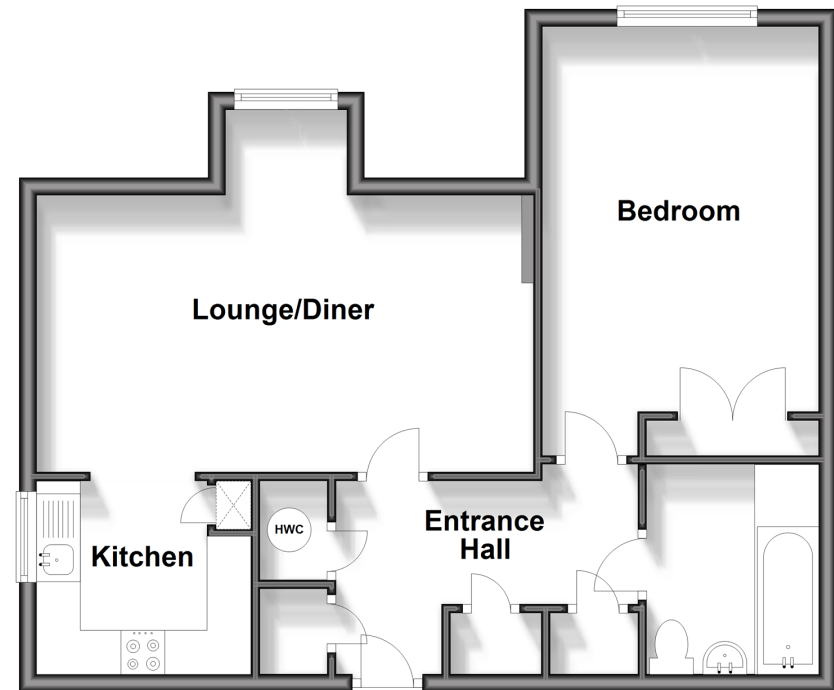
Entrance Hall
Lounge/Diner: 18'7 x 10'3 (5.67m x 3.13m)
Kitchen: 8'0 x 7'2 (2.44m x 2.19m)
Bedroom: 16'1 x 10'3 (4.91m x 3.13m)
Bathroom

OUTSIDE

Communal Gardens

Second Floor

Approx. 56.1 sq. metres (603.4 sq. feet)



Call Faversham - 01795 535517 ■ wardsofkent.co.uk

■ Legal advice should be taken to verify fixtures/fittings, planning, alterations and/or lease details
■ Through a Homewise Home For Life Plan people aged 60+ can secure this property for up to 59% less, by purchasing a Lifetime Lease.

■ Appliances & services are untested, dimensions are approximate and floor plans are not to scale



10831676/20240410/JB/PJ