



OVER 60?

Secure this property
for up to **59% less!**

Price

£1,100,000

Freehold

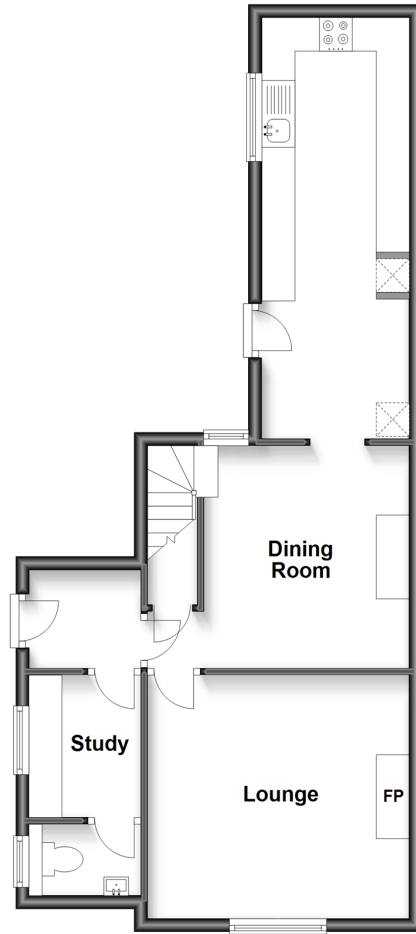
3x  1x  3x 

**Goodnestone Cottages,
Goodnestone Lane,
Goodnestone,
Faversham, Kent, ME13**

Wards
Helping you move forwards

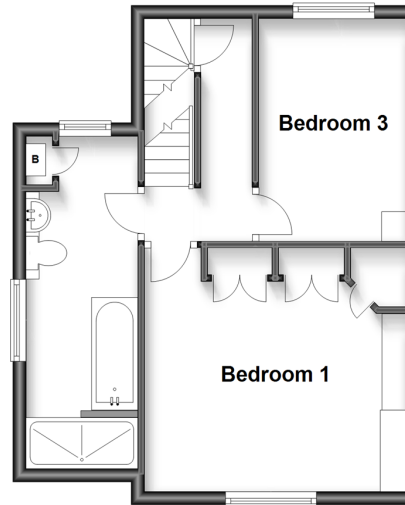
Ground Floor

Approx. 50.9 sq. metres (548.4 sq. feet)



Split Level First Floor

Approx. 36.9 sq. metres (397.0 sq. feet)



Second Floor

Approx. 15.2 sq. metres (163.5 sq. feet)



Accommodation

GROUND FLOOR

Entrance Lobby

Lounge: 13'0 x 11'11 (3.97m x 3.63m)

Dining Room: 13'0 x 10'10 (3.97m x 3.30m)

Kitchen: 20'8 x 7'2 (6.30m x 2.19m)

Study: 7'0 x 5'6 (2.14m x 1.68m)

Cloakroom

SPLIT LEVEL FIRST FLOOR

Landing

Bedroom 1: 13'0 x 11'10 (3.97m x 3.61m)

Bedroom 3: 10'10 x 7'5 (3.30m x 2.26m)

Bathroom

SECOND FLOOR

Bedroom 2: 11'9 x 9'8 (3.58m x 2.95m)

OUTSIDE

Formal gardens

Large show jumping arena

Paddocks

Cross country practise area

2 garden chalets

Parking for several vehicles

Parking for horse boxes

Block & Tack Rooms



Main features

- Delightful semi detached cottage with equestrian facilities - 9.06 acres
- Large all weather fibre sand surface 60m x 30m
- Private access to equestrian facilities
- Fabulous outlook and views, an ideal country retreat
- Easy access to good transport links, minutes from Faversham & Whitstable



Nearest Schools

Primary Schools: Graveney Primary 0.6 miles, Hernhill C of E Primary 1.2 miles

Secondary Schools: Queen Elizabeth's Grammar School 1.6 miles, The Abbey School 2.2 miles



Transport Information

Train Stations: Faversham 1.9 miles, Selling 2.7 miles, Whitstable 5.1 miles



Address

Goodnestone Cottages, Goodnestone Lane, Goodnestone, Faversham, Kent, ME13



Directions

For directions to this property please contact us.



Call Faversham Branch 01795 535517 ■ wardsofkent.co.uk



- Legal advice should be taken to verify fixtures/fittings, planning, alterations and/or lease details
- Appliances & services are untested, dimensions are approximate and floor plans are not to scale
- Through a Homewise Home For Life Plan people aged 60+ can secure this property for up to 59% less, by purchasing a Lifetime Lease.



10831712/20230125/PJ/PJ