



**Guide Price**  
**£290,000**

**Freehold**

3x  1x  2x 

**Lower Road, Faversham,  
Kent, ME13**

**OVER 60?**

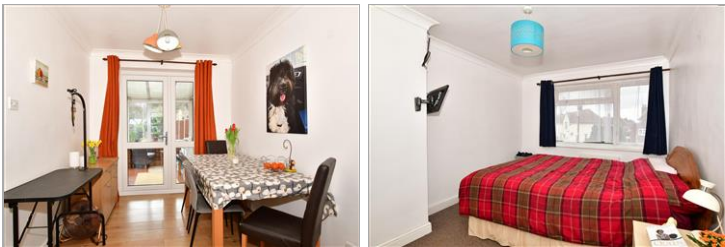
Secure this property  
for up to **59% less!**



**Video Tour available**

*Wards*  
Helping you move forwards





## Main features

- Mid terrace house with conservatory
- Popular location close to local shops and schools
- Ideal first or young family home
- Good sized rear garden
- Parking and potential to erect a garage to rear of garden subject to consents

## Accommodation

### GROUND FLOOR

Entrance Porch

Entrance Hall

Lounge: 14'0 x 10'9 (4.27m x 3.28m)

Dining Area: 9'1 x 7'11 (2.77m x 2.41m)

Kitchen: 8'11 x 8'4 (2.72m x 2.54m)

Conservatory: 9'2 x 7'3 (2.80m x 2.21m)

### FIRST FLOOR

Landing

Bedroom 1: 12'8 x 9'4 (3.86m x 2.85m)

Bedroom 2: 10'6 x 9'10 (3.20m x 3.00m)

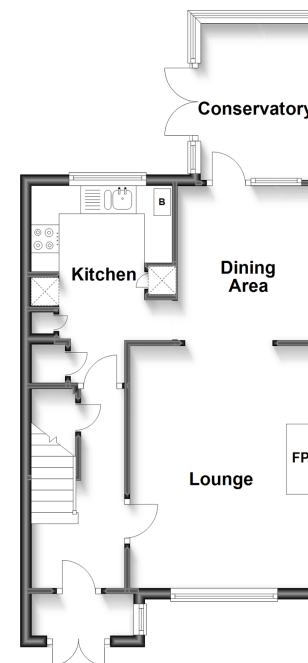
Bedroom 3: 7'5 x 7'2 (2.26m x 2.19m)

Bathroom

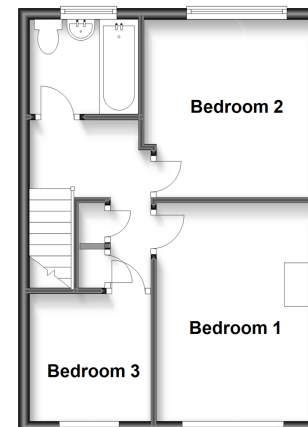
### OUTSIDE

Front & Rear Garden

**Ground Floor**  
Approx. 44.0 sq. metres (473.5 sq. feet)



**First Floor**  
Approx. 36.5 sq. metres (393.2 sq. feet)



**Call Faversham - 01795 535517 ■ [wardsof Kent.co.uk](http://wardsof Kent.co.uk)**

- Legal advice should be taken to verify fixtures/fittings, planning, alterations and/or lease details
- Appliances & services are untested, dimensions are approximate and floor plans are not to scale
- Through a Homewise Home For Life Plan people aged 60+ can secure this property for up to 59% less, by purchasing a Lifetime Lease.



10831716/20230502/PJ/PJ