



OVER 60?

Secure this property
for up to **59% less!**



Video Tour available

Price

£525,000

Freehold

4x  3x  1x 

**Athelstan Road,
Faversham, Kent, ME13**

Wards
Helping you move forwards



Main features

- Substantial extended end of terrace house in sought after location
- Fantastic kitchen/diner with wonderful bi-fold doors onto garden
- Downstairs shower room, upstairs bathroom plus en-suite
- Easy to maintain gardens, ideal for little ones
- Garage to rear of property

Accommodation

GROUND FLOOR

Entrance Hall

Lounge: 12'5 x 11'6 (3.79m x 3.51m)

Study: 6'10 x 4'9 (2.08m x 1.45m)

Shower Room

Kitchen: 10'1 x 9'5 (3.08m x 2.87m) plus 7'5 x 6'6 (2.26m x 1.98m)

Dining Area: 15'11 x 9'5 (4.85m x 2.87m)

Utility Room: 9'9 x 4'9 (2.97m x 1.45m)

FIRST FLOOR

Landing

Bedroom 1: 13'5 x 8'6 (4.09m x 2.59m)

En-Suite Shower Room

Bedroom 2: 10'11 x 10'6 (3.33m x 3.20m)

Bedroom 3: 10'10 x 10'7 (3.30m x 3.23m)

Bedroom 4: 6'11 x 5'4 (2.11m x 1.63m) plus 6'11 x 4'3 (2.11m x 1.30m)

Bathroom

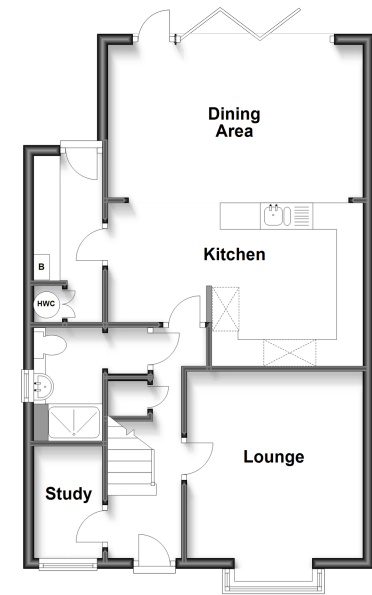
OUTSIDE

Front Garden

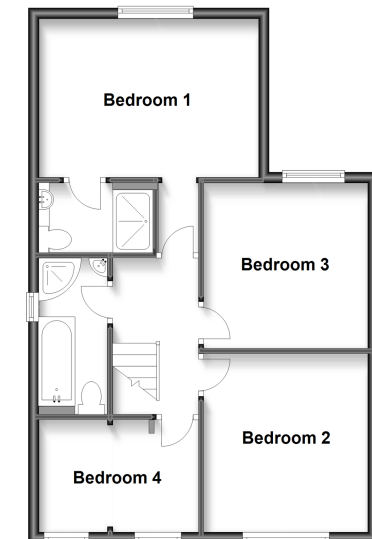
Rear Garden

Detached Garage

Ground Floor
Approx. 57.9 sq. metres (623.3 sq. feet)



First Floor
Approx. 54.1 sq. metres (582.4 sq. feet)



Call Faversham - 01795 535517 ■ wardsofkent.co.uk

- Legal advice should be taken to verify fixtures/fittings, planning, alterations and/or lease details
- Appliances & services are untested, dimensions are approximate and floor plans are not to scale
- Through a Homewise Home For Life Plan people aged 60+ can secure this property for up to 59% less, by purchasing a Lifetime Lease.



10831719/20230721/HR/PJ