



**OVER 60?**

Secure this property  
for up to **59% less!**



Video Tour available

**Price**

**£545,000**

**Freehold**

4x  2x  2x 

**Mummery Court,  
Painters Forstal,  
Faversham, Kent, ME13**

**Wards**  
Helping you move forwards





## Main features

- Deceptively spacious house in delightful village setting
- Bedroom 4 currently used as a fantastic home office
- Garden chalet perfect for summer entertaining
- Lovely village pub, private school and play park within a short stroll
- Garage plus parking for 2/3 cars

## Accommodation

### GROUND FLOOR

Entrance Porch  
 Entrance Hall  
 Cloakroom  
 Lounge: 16'7 x 15'2 (5.06m x 4.63m)  
 Dining Room: 11'6 x 9'4 (3.51m x 2.85m)  
 Conservatory: 9'5 x 8'9 (2.87m x 2.67m)  
 Utility Room  
 Kitchen: 12'10 x 12'5 (3.91m x 3.79m)

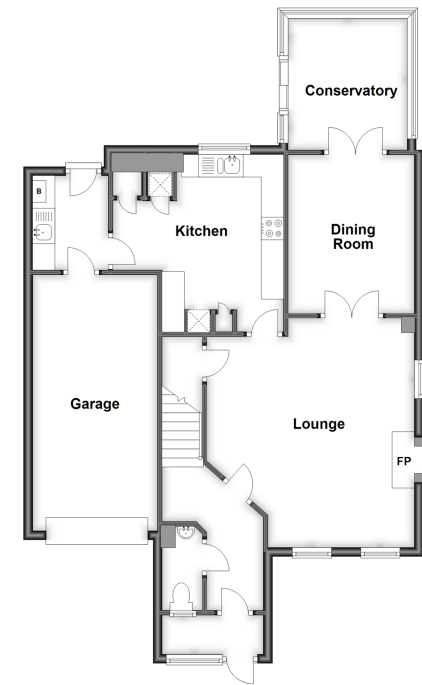
### FIRST FLOOR

Landing  
 Bedroom 1: 13'6 x 11'4 (4.12m x 3.46m)  
 En-Suite Shower Room  
 Bedroom 2: 11'3 x 10'4 (3.43m x 3.15m)  
 Bedroom 3: 8'10 x 6'11 (2.69m x 2.11m)  
 Bedroom 4/Home Office: 16'0 x 9'0 (4.88m x 2.75m)  
 Bathroom

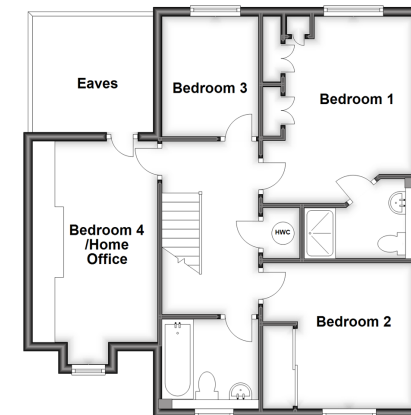
### OUTSIDE

Front & Rear Gardens  
 Garage: 18'5 x 9'1 (5.62m x 2.77m)  
 Parking for 2/3 cars

**Ground Floor**  
 Approx. 85.9 sq. metres (924.2 sq. feet)



**First Floor**  
 Approx. 62.5 sq. metres (673.0 sq. feet)



**Call Faversham - 01795 535517 ■ [wardsofkent.co.uk](http://wardsofkent.co.uk)**

- Legal advice should be taken to verify fixtures/fittings, planning, alterations and/or lease details
- Appliances & services are untested, dimensions are approximate and floor plans are not to scale
- Through a Homewise Home For Life Plan people aged 60+ can secure this property for up to 59% less, by purchasing a Lifetime Lease.



10831723/20230401/PJ/PJ