



OVER 60?

Secure this property
for up to **59% less!**

Price

£650,000

Freehold

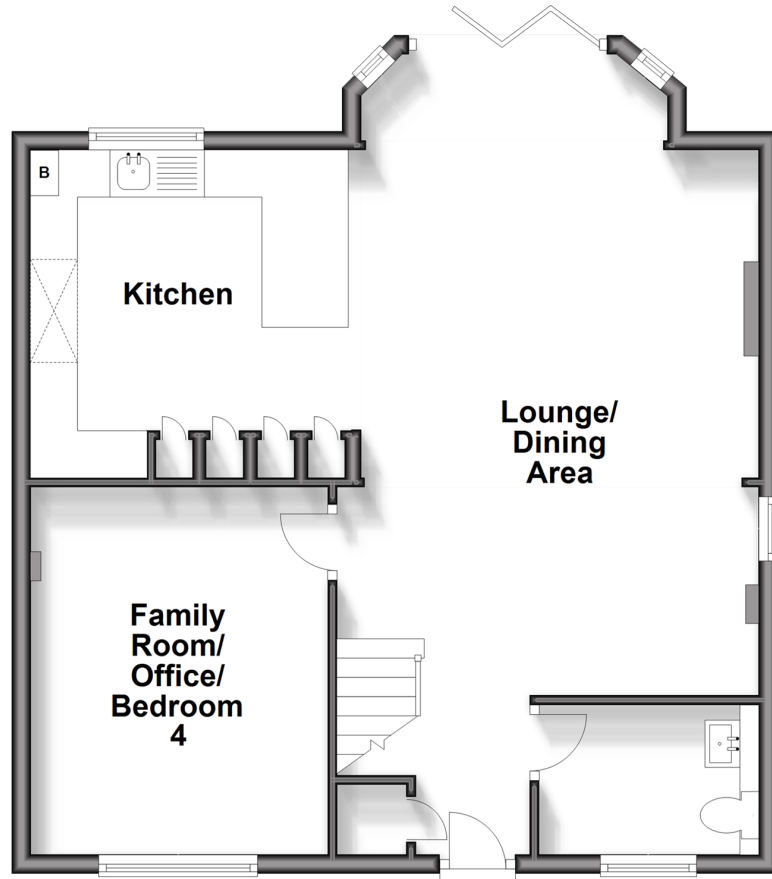
3x  2x  2x 

**Brogdale Place,
Ospringe, Faversham,
Kent, ME13**

Wards
Helping you move forwards

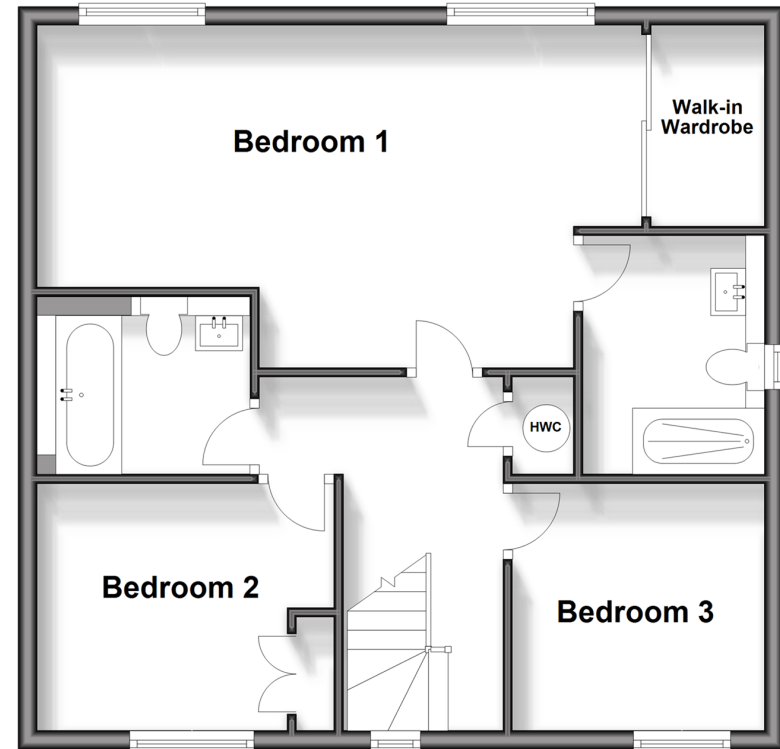
Ground Floor

Approx. 60.8 sq. metres (654.0 sq. feet)



First Floor

Approx. 57.7 sq. metres (620.7 sq. feet)



Accommodation

GROUND FLOOR

Entrance Hall

Cloakroom

Lounge/Dining Area: 22'7 x 13'7 (6.89m x 4.14m)

Kitchen: 13'0 x 10'10 (3.97m x 3.30m)

Family Room/Office/Bedroom 4: 13'2 x 10'10 (4.02m x 3.30m)

FIRST FLOOR

Landing

Bedroom 1: 22'5 x 11'6 (6.84m x 3.51m)

En-suite Shower Room

Bedroom 2: 11'5 x 9'1 (3.48m x 2.77m)

Bedroom 3: 8'10 x 8'7 (2.69m x 2.62m)

Bathroom

OUTSIDE

Front Garden

Rear Garden

Double Garage

Parking for several cars



Main features

- Spacious modern family home with open plan living space
- Desirable location in quiet cul de sac
- Within walking distance to town centre and mainline station
- High specification en-suite shower room
- Established private gardens



Nearest Schools

Primary Schools: Ethelbert Road Infant School 0.3 miles, Ospringe C of E Primary 0.7 miles

Secondary Schools: The Abbey School 0.6 miles, Queen Elizabeth's Grammar School 1.7 miles



Transport Information

Train Stations: Faversham 0.9 miles, Selling 4.2 miles, Teynham 4.4 miles



Address

Brogdale Place, Ospringe, Faversham, Kent, ME13



Directions

For directions to this property please contact us.



Call Faversham Branch 01795 535517 ■ wardsofkent.co.uk



- Legal advice should be taken to verify fixtures/fittings, planning, alterations and/or lease details
- Appliances & services are untested, dimensions are approximate and floor plans are not to scale
- Through a Homewise Home For Life Plan people aged 60+ can secure this property for up to 59% less, by purchasing a Lifetime Lease.



10831745/20240129/PJ/PJ