



OVER 60?

Secure this property
for up to **59% less!**

Price
£340,000

Freehold

2x  1x  1x 

**Serpentine Road,
Faversham, Kent, ME13**

Wards
Helping you move forwards



Main features

- **Almost new semi-detached house built to a high standard**
- **High spec internal finish featuring open plan living**
- **Desirable development on the outskirts of Faversham**
- **Close to Oare village and tidal Creek**
- **New created Country Park perfect for walks and cycle rides**

Accommodation

GROUND FLOOR

Entrance Hall
Cloakroom
Living Area: 15'6 x 9'10 (4.73m x 3.00m)
Kitchen/Diner: 14'4 x 8'4 (4.37m x 2.54m)

FIRST FLOOR

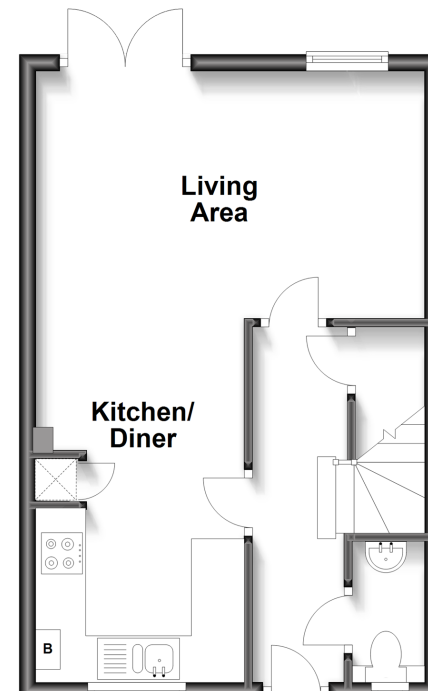
Landing
Bedroom 1: 15'5 into fitted wardrobe x 8'6 (4.70m x 2.59m)
Bedroom 2: 15'5 x 8'1 (4.70m x 2.47m)
Bathroom

OUTSIDE

Small front garden
Enclosed rear garden
Off road parking

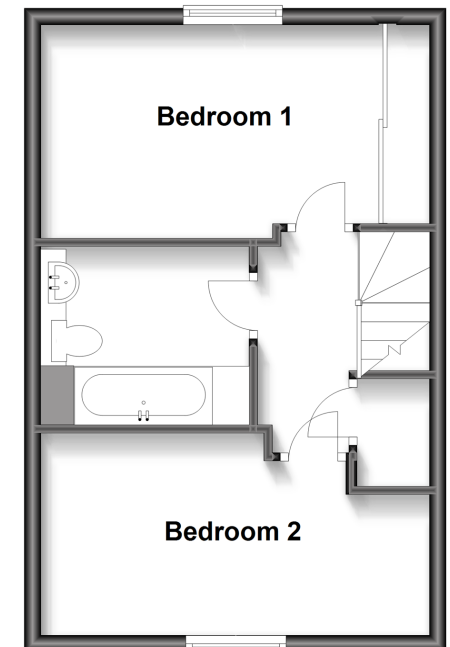
Ground Floor

Approx. 35.1 sq. metres (377.6 sq. feet)



First Floor

Approx. 35.6 sq. metres (382.9 sq. feet)



Call Faversham - 01795 535517 ■ wardsofkent.co.uk

- Legal advice should be taken to verify fixtures/fittings, planning, alterations and/or lease details
- Through a Homewise Home For Life Plan people aged 60+ can secure this property for up to 59% less, by purchasing a Lifetime Lease.

- Appliances & services are untested, dimensions are approximate and floor plans are not to scale



10831755/20230403/JB/PJ