



**Price**  
**£295,000**

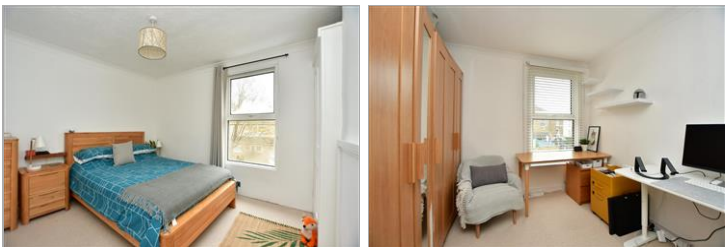
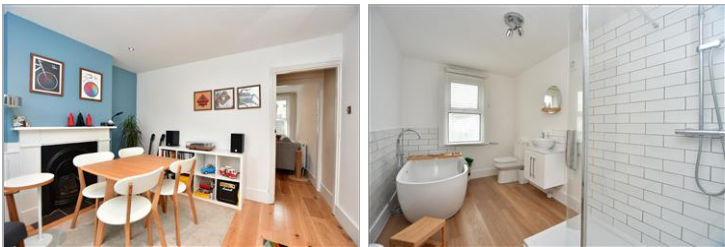
**Freehold**

2x  1x  2x 

**Cyprus Road,  
Faversham, Kent, ME13**

*Wards*  
Helping you move forwards





## Main features

- Extended smart Victorian cottage with modern well appointed interior
- Superb kitchen with breakfast area
- Lounge, separate dining room plus first floor bathroom
- Great location, easy walk to town centre, park and mainline station
- Easy to maintain rear garden

## Accommodation

### GROUND FLOOR

Dining Room: 11'10 x 10'4 (3.61m x 3.15m)

Lounge: 11'10 x 10'4 (3.61m x 3.15m)

Kitchen: 13'3 x 6'11 (4.04m x 2.11m)

Breakfast Area: 6'6 x 5'7 (1.98m x 1.70m)

### FIRST FLOOR

Landing

Bedroom 1: 12'0 x 10'4 (3.66m x 3.15m)

Bedroom 2: 10'5 x 9'2 (3.18m x 2.80m)

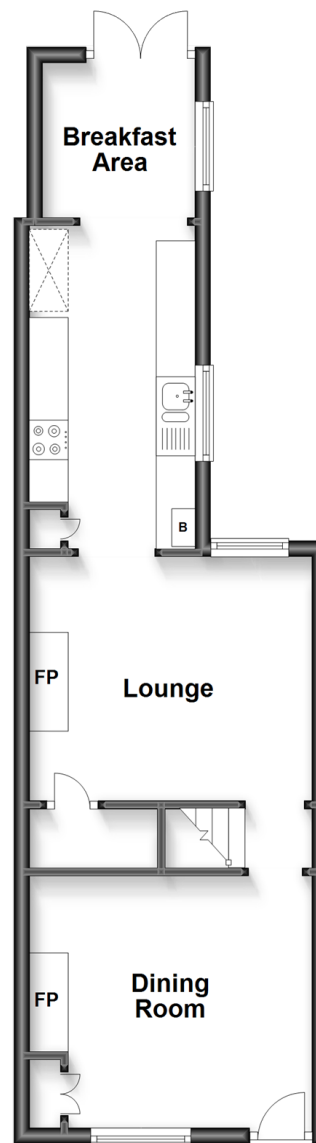
Bathroom

### OUTSIDE

Rear Garden

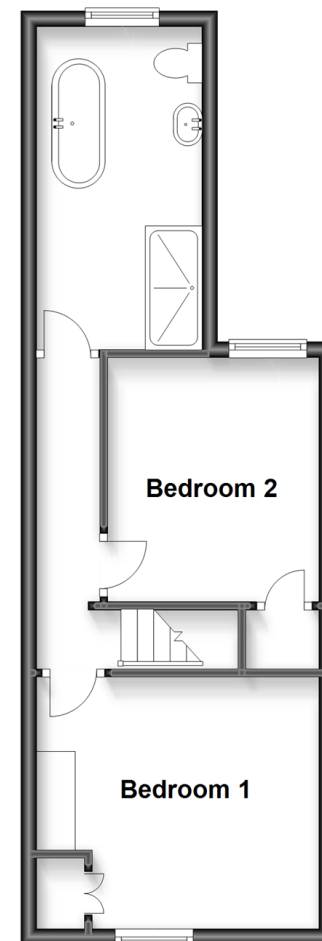
### Ground Floor

Approx. 39.2 sq. metres (422.3 sq. feet)



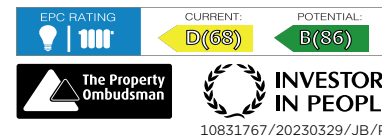
### First Floor

Approx. 35.2 sq. metres (378.7 sq. feet)



**Call Faversham - 01795 535517 ■ [wardsofkent.co.uk](http://wardsofkent.co.uk)**

- Legal advice should be taken to verify fixtures/fittings, planning, alterations and/or lease details
- Appliances & services are untested, dimensions are approximate and floor plans are not to scale



10831767/20230329/JB/PJ