



**OVER 60?**

Secure this property  
for up to **59% less!**

**Price**  
**£395,000**

**Freehold**

3x  2x  1x 

**Goldfinch Drive,  
Faversham, Kent, ME13**

*Wards*  
Helping you move forwards





## Main features

- Well designed 2 year old family orientated home
- Within walking distance to town centre
- High specification kitchen
- Main bedroom with en-suite shower room
- Open car port and driveway for 2 cars

## Accommodation

### GROUND FLOOR

Entrance Hall

Cloakroom

Lounge: 15'4 x 14'2 (4.68m x 4.32m)

Kitchen/Diner: 16'2 x 8'2 (4.93m x 2.49m)

### FIRST FLOOR

Landing

Bedroom 1: 12'9 x 8'5 (3.89m x 2.57m)

En-suite Shower Room

Bedroom 2: 11'7 x 8'6 (3.53m x 2.59m)

Bedroom 3: 9'11 x 6'5 (3.02m x 1.96m)

Bathroom

### OUTSIDE

Front Garden

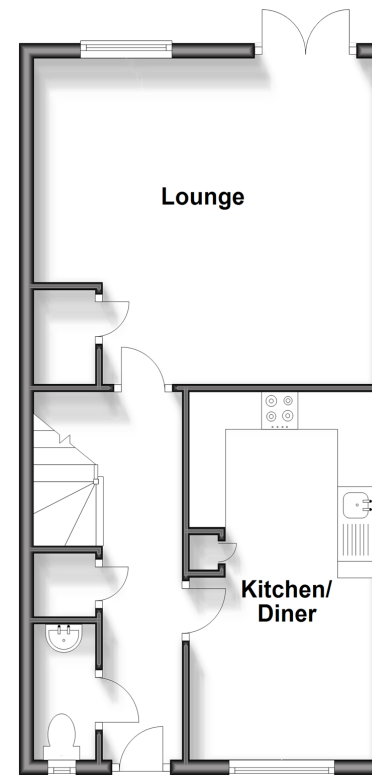
Rear Garden

Open Car Port

Parking for 2 cars

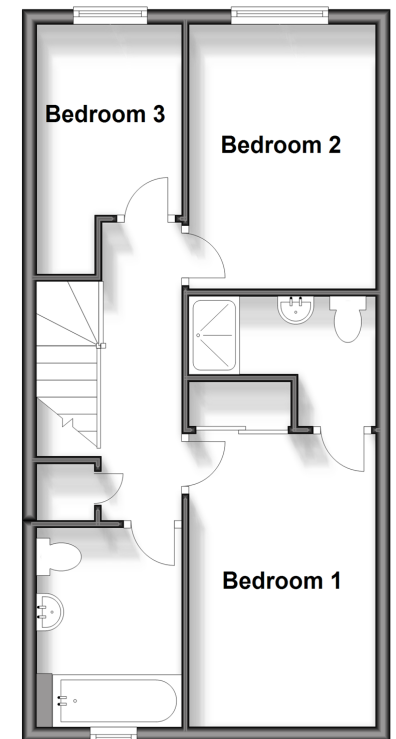
### Ground Floor

Approx. 44.0 sq. metres (474.1 sq. feet)



### First Floor

Approx. 44.0 sq. metres (474.1 sq. feet)



**Call Faversham - 01795 535517 ■ [wardsofkent.co.uk](http://wardsofkent.co.uk)**

- Legal advice should be taken to verify fixtures/fittings, planning, alterations and/or lease details
- Appliances & services are untested, dimensions are approximate and floor plans are not to scale
- Through a Homewise Home For Life Plan people aged 60+ can secure this property for up to 59% less, by purchasing a Lifetime Lease.



10831771/20240318/JB/PJ