

OVER 60?

Secure this property
for up to **59% less!**



Price

£925,000

Freehold

5x  4x  3x 

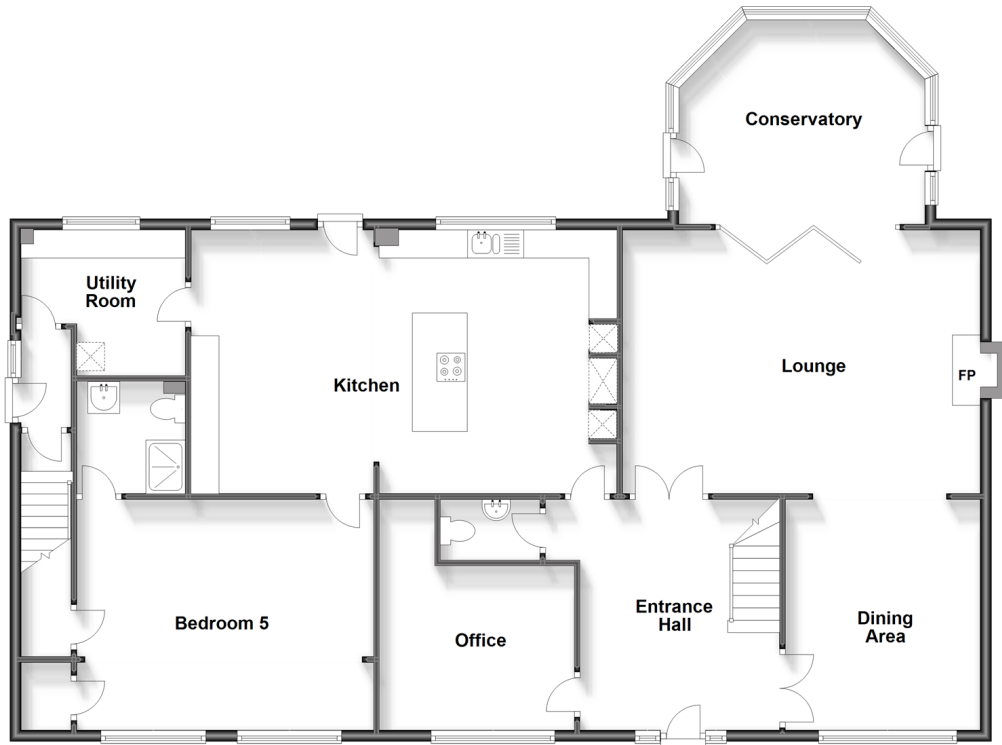
Selling Court, Selling, Faversham, Kent,

ME13

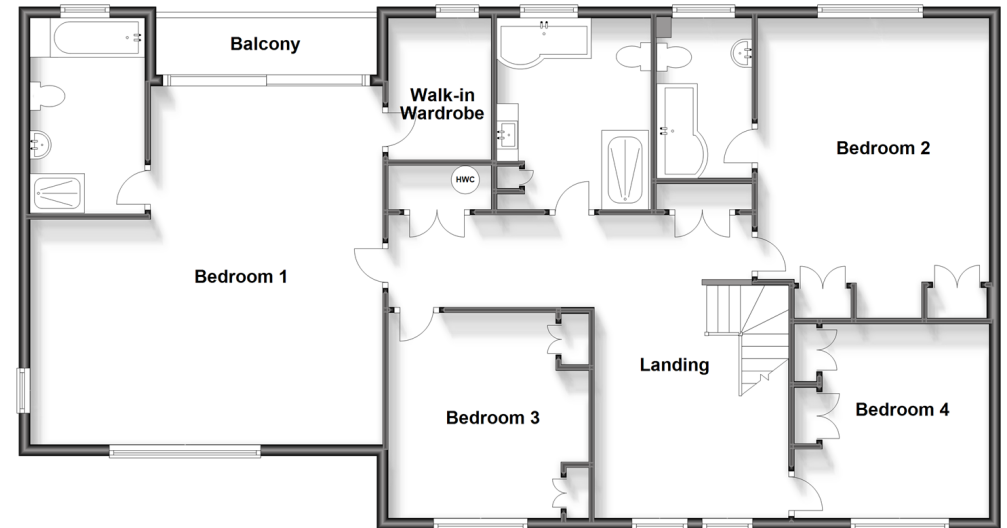
Wards

Helping you move forwards

Split Level Ground Floor
Approx. 166.7 sq. metres (1794.8 sq. feet)



First Floor
Approx. 138.2 sq. metres (1487.1 sq. feet)



Accommodation

GROUND FLOOR

Entrance Hall

Cloakroom

Lounge: 20'10 x 15'4 (6.35m x 4.68m)

Dining Area: 13'4 x 11'3 (4.07m x 3.43m)

Office: 11'11 x 11'6 (3.63m x 3.51m)

Conservatory: 15'3 x 12'8 (4.65m x 3.86m)

Kitchen: 25'0 x 15'4 (7.63m x 4.68m)

Utility Room: 9'6 x 8'5 (2.90m x 2.57m)

Bedroom 5: 13'6 x 11'5 (4.12m x 3.48m)

En-Suite Shower Room

FIRST FLOOR

Landing

Bedroom 1: 21'3 x 21'3 (6.48m x 6.48m)

En-Suite

Bedroom 2: 17'6 x 13'6 (5.34m x 4.12m)

En-Suite Bathroom

Bedroom 3: 11'6 x 11'5 (3.51m x 3.48m)

Bedroom 4: 11'5 x 11'5 (3.48m x 3.48m)

Bathroom

OUTSIDE

Front Garden

Rear Garden

Ample Parking



Main features

- Detached distinct Neo-Georgian style house
- Exclusive small development of 18 houses in a delightful village setting
- Ample parking, potential to erect double garage with room over (previously approved now lapsed)
- Set back on large plot with private rear garden
- Close to popular Woods, country pub, and access to mainline station



Nearest Schools

Primary: Selling C of E 0.1 miles, Sheldwich 1.8 miles, Boughton-under-Blean and Dunkirk 2.1 miles

Secondary: Hope View 2.8 miles, The Abbey School 3.0 miles, Queen Elizabeth's Grammar School 3.5 miles



Transport Information

Train Stations: Selling 0.7 miles, Chilham 2.8 miles, Faversham 3.2 miles



Address

Selling Court, Selling, Faversham, Kent, ME13



Directions

For directions to this property please contact us.



Wards
Helping you move forwards

Call Faversham Branch 01795 535517 ■ wardsofkent.co.uk



- Legal advice should be taken to verify fixtures/fittings, planning, alterations and/or lease details
- Appliances & services are untested, dimensions are approximate and floor plans are not to scale
- Through a Homewise Home For Life Plan people aged 60+ can secure this property for up to 59% less, by purchasing a Lifetime Lease.



10831803/20231002/PJ/PJ