



Price

£225,000

Leasehold

2x  1x  1x 

**Gange Mews,
Faversham, Kent, ME13**

Wards
Helping you move forwards



Main features

- First floor retirement apartment
- in sought after complex
- Short Stroll away from town centre shops, supermarkets and station
- Secure development with on site warden
- No chain
- Over 55's only

Accommodation

FIRST FLOOR

Entrance Hall

Lounge: 17'2 x 14'1 (5.24m x 4.30m)

Kitchen: 10'4 x 5'11 (3.15m x 1.80m)

Bedroom 1: 14'4 x 8'7 (4.37m x 2.62m)

Bedroom 2: 13'10 x 5'11 (4.22m x 1.80m)

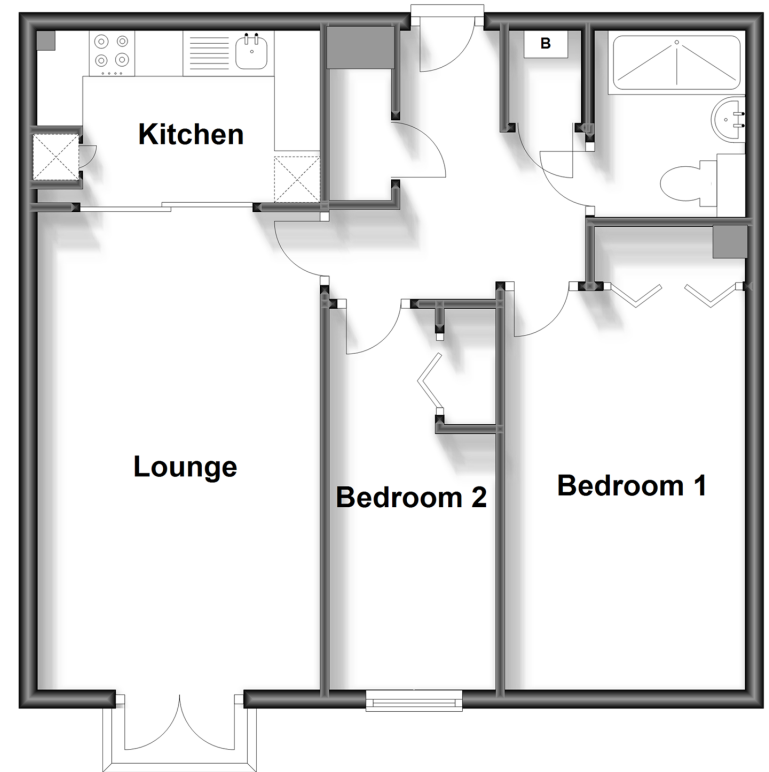
Shower Room

OUTSIDE

Communal Garden

First Floor

Approx. 55.9 sq. metres (601.9 sq. feet)



Call Faversham - 01795 535517 ■ wardsofkent.co.uk

- Legal advice should be taken to verify fixtures/fittings, planning, alterations and/or lease details
- Appliances & services are untested, dimensions are approximate and floor plans are not to scale



10831804/20231120/HR/PJ