



OVER 60?

Secure this property
for up to **59% less!**

Price

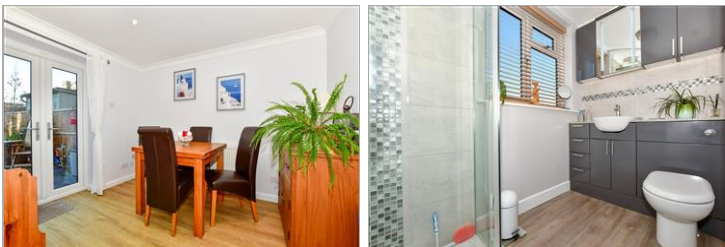
£385,000

Freehold

2x  1x  1x 

**Ethelbert Road,
Faversham, Kent, ME13**

Wards
Helping you move forwards



Main features

- Desirable location within walking distance to town centre
- Spacious living accommodation
- Ample parking and manageable garden
- Just minutes away from mainline station and A2/M2 road links
- Immaculate condition, ready to move in

Accommodation

GROUND FLOOR

Entrance Hall

Cloakroom

Lounge: 19'0 x 13'6 (5.80m x 4.12m)

Dining Area: 9'9 x 7'8 (2.97m x 2.34m)

Kitchen: 11'3 x 6'2 (3.43m x 1.88m)

Storage Room : 7'4 x 6'11 (2.24m x 2.11m)

FIRST FLOOR

Landing

Bedroom 1: 16'4 x 8'5 (4.98m x 2.57m)

Bedroom 2: 11'1 x 5'8 (3.38m x 1.73m)

Shower Room

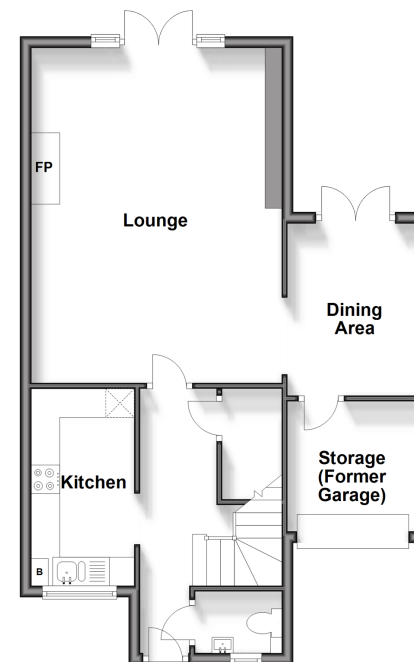
OUTSIDE

Front Garden

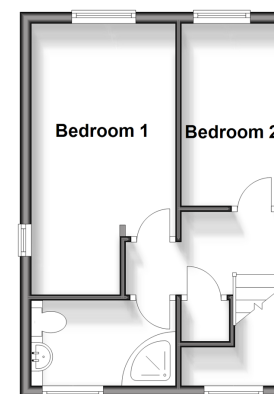
Rear Garden

Driveway

Ground Floor
Approx. 57.8 sq. metres (621.7 sq. feet)



First Floor
Approx. 28.1 sq. metres (302.2 sq. feet)



Call Faversham - 01795 535517 ■ wardsofkent.co.uk

- Legal advice should be taken to verify fixtures/fittings, planning, alterations and/or lease details
- Appliances & services are untested, dimensions are approximate and floor plans are not to scale
- Through a Homewise Home For Life Plan people aged 60+ can secure this property for up to 59% less, by purchasing a Lifetime Lease.



10831807/20240416/HR/PJ