



Price
£335,000

Freehold

2x  1x  2x 

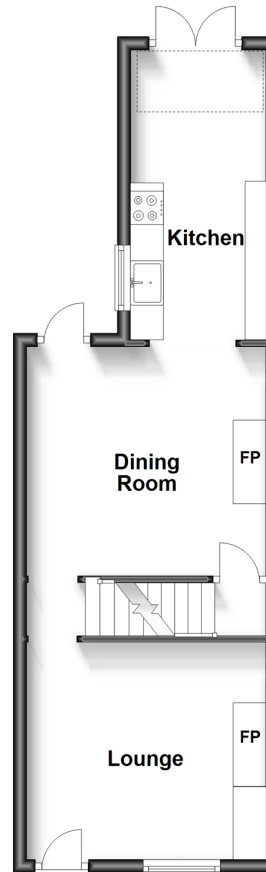
**Church Road, Oare,
Faversham, Kent, ME13**

OVER 60?

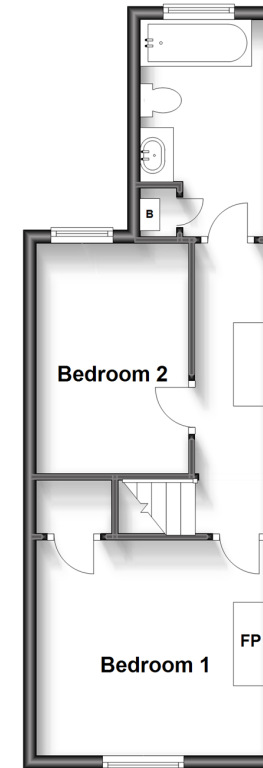
Secure this property
for up to **59% less!**

Wards
Helping you move forwards

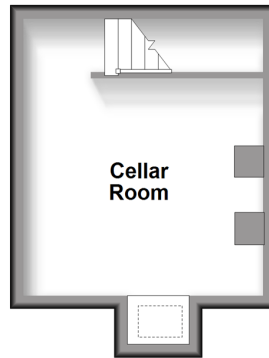
Ground Floor
Approx. 36.9 sq. metres (397.3 sq. feet)



First Floor
Approx. 33.1 sq. metres (356.2 sq. feet)



Basement
Approx. 15.7 sq. metres (168.7 sq. feet)



Accommodation

GROUND FLOOR

Lounge: 11'9 x 10'8 (3.58m x 3.25m)
Dining Room: 11'9 x 11'2 (3.58m x 3.41m)
Kitchen: 14'4 x 6'8 (4.37m x 2.03m)

BASEMENT

Cellar Room: 11'5 x 10'6 (3.48m x 3.20m)

FIRST FLOOR

Landing
Bedroom 1: 11'9 x 10'7 (3.58m x 3.23m)
Bedroom 2: 11'2 x 7'7 (3.41m x 2.31m)
Bathroom

OUTSIDE

Rear Garden



Main features

- Delightful period cottage in sought after village location
- Cottage style garden, cellar and wood burning stove
- Views from the front of Oare Creek
- Walking distance to popular traditional pub/restaurant
- Close to a variety of countryside walks and wildlife habitat



Nearest Schools

Primary Schools: Davington Primary 0.7 miles, Luddenham School 1.4 miles

Secondary Schools: Queen Elizabeth's Grammar School 1.9 miles, The Abbey School 2.6 miles



Transport Information

Train Stations: Faversham 2.9 miles, Teynham 4.9 miles, Selling 6.2 miles



Address

Church Road, Oare, Faversham, Kent, ME13



Directions

For directions to this property please contact us.



Wards
Helping you move forwards

Call Faversham Branch 01795 535517 ■ wardsofkent.co.uk



- Legal advice should be taken to verify fixtures/fittings, planning, alterations and/or lease details
- Appliances & services are untested, dimensions are approximate and floor plans are not to scale
- Through a Homewise Home For Life Plan people aged 60+ can secure this property for up to 59% less, by purchasing a Lifetime Lease.



10831815/20230609/JB/PJ