



**OVER 60?**

Secure this property  
for up to **59% less!**

**Price**

**£450,000**

**Freehold**

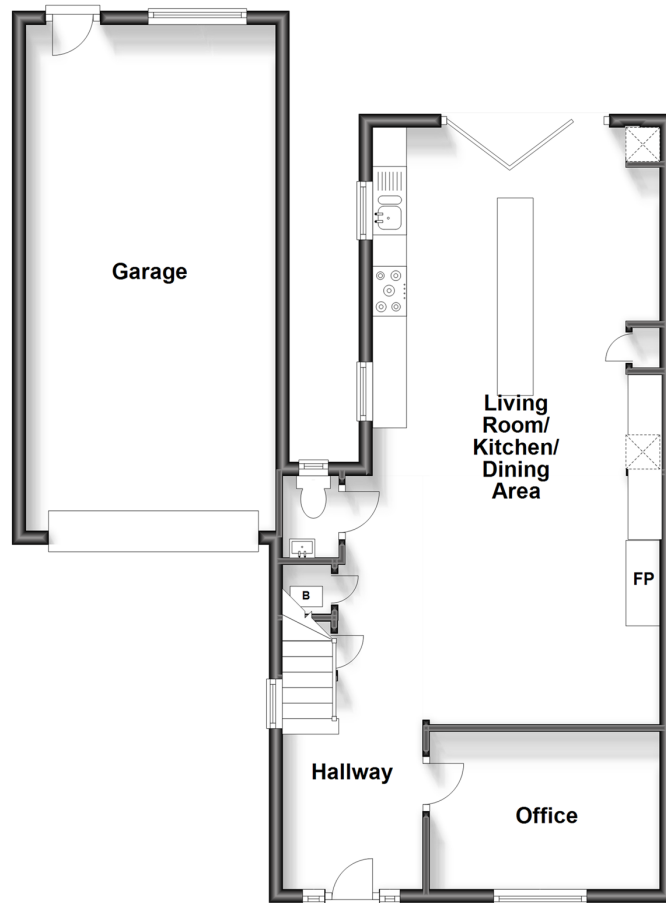
3x  2x  2x 

**Brogdale Road,  
Ospringe, Faversham,  
Kent, ME13**

*Wards*  
Helping you move forwards

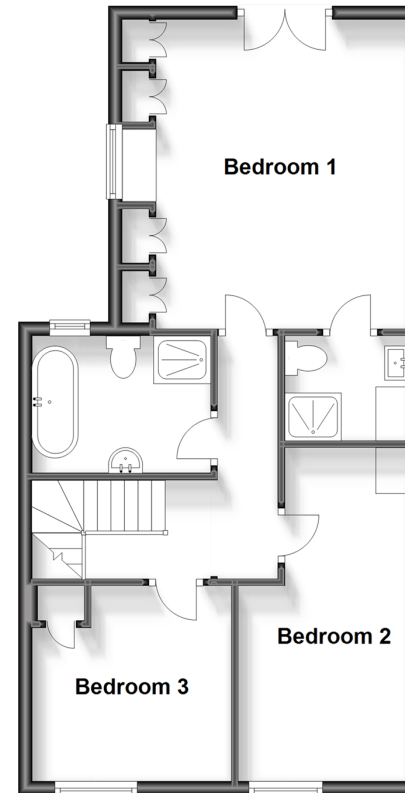
### Ground Floor

Approx. 82.7 sq. metres (890.0 sq. feet)



### First Floor

Approx. 55.9 sq. metres (601.7 sq. feet)



## Accommodation

### GROUND FLOOR

Hallway

Office: 11'0 x 7'10 (3.36m x 2.39m)

Cloakroom

Living/Kitchen/Dining Area: 29'2 (8.90m)  
narrowing to 13'6 at narrowest point  
(4.12m) x 15'7 maximum (4.75m)

### FIRST FLOOR

Landing

Bedroom 1: 16'5 x 12'8 (5.01m x 3.86m)

En-Suite Shower Room

Bedroom 2: 9'11 x 9'0 (3.02m x 2.75m)

Bedroom 3: 14'7 x 8'4 (4.45m x 2.54m)

Bathroom

### OUTSIDE

Front & Rear Garden

Garage

Driveway





## Main features

- Beautifully presented cottage in desirable location
- Fabulous open plan living plus useful office
- Mature, established private rear garden
- Close to open countryside yet minutes away from the historic market town of Faversham
- Garage and driveway



### Nearest Schools

Primary Schools: Ospringe C of E Primary 0.7 miles, Ethelbert Road Infant School 0.8 miles

Secondary Schools: The Abbey School 0.7 miles, Queen Elizabeth's Grammar School 1.5 miles



### Transport Information

Train Stations: Faversham 1.5 miles, Selling 4.8 miles, Teynham 5.0 miles



### Address

Brogdale Road, Ospringe, Faversham, Kent, ME13



### Directions

For directions to this property please contact us.





**Wards**  
Helping you move forwards

Call Faversham Branch 01795 535517 ■ [wardsofkent.co.uk](http://wardsofkent.co.uk)



■ Legal advice should be taken to verify fixtures/fittings, planning, alterations and/or lease details ■ Appliances & services are untested, dimensions are approximate and floor plans are not to scale  
■ Through a Homewise Home For Life Plan people aged 60+ can secure this property for up to 59% less, by purchasing a Lifetime Lease.



10831819/20230804/JB/PJ