



**Price**  
**£460,000**

**Freehold**

4x  1x  2x 

**The Street, Newnham,  
Sittingbourne, Kent,  
ME9**

**OVER 60?**

Secure this property  
for up to **59% less!**

*Wards*  
Helping you move forwards





## Main features

- Substantial family home in delightful village location
- Close transport links to A2/M2
- Fabulous established and colourful gardens
- Garage and additional parking spaces
- No onward chain

## Accommodation

### GROUND FLOOR

Entrance Lobby

Entrance Hall

Cloakroom

Lounge: 12'11 x 11'5 (3.94m x 3.48m)

Dining Area: 12'6 x 11'10 (3.81m x 3.61m)

Study: 10'2 x 7'11 (3.10m x 2.41m)

Kitchen: 11'11 x 8'6 (3.63m x 2.59m)

### FIRST FLOOR

Landing

Bedroom 1: 11'11 x 11'8 (3.63m x 3.56m)

Bedroom 2: 13'0 x 10'2 (3.97m x 3.10m)

Bedroom 3: 13'0 x 10'2 (3.97m x 3.10m)

Bedroom 4: 8'9 x 7'0 (2.67m x 2.14m)

Bathroom

### OUTSIDE

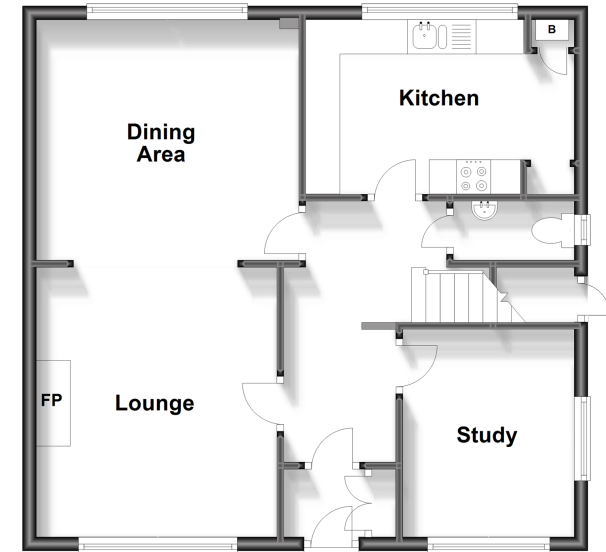
Front Garden

Large Rear Garden

Garage and Driveway

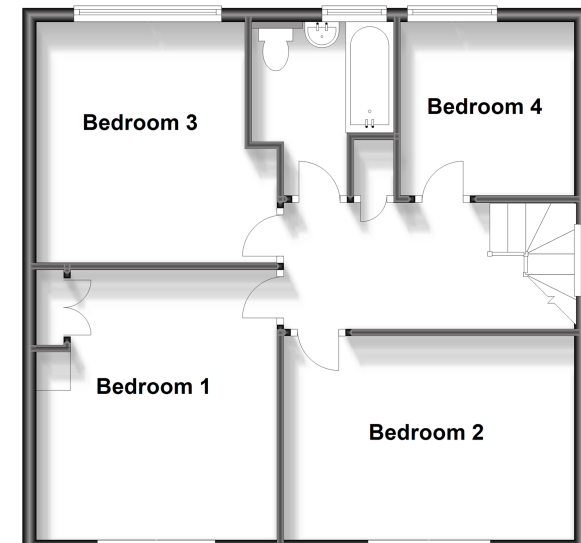
### Ground Floor

Approx. 59.2 sq. metres (637.3 sq. feet)



### First Floor

Approx. 59.2 sq. metres (637.3 sq. feet)



**Call Faversham - 01795 535517 ■ [wardsof Kent.co.uk](http://wardsof Kent.co.uk)**

- Legal advice should be taken to verify fixtures/fittings, planning, alterations and/or lease details
- Appliances & services are untested, dimensions are approximate and floor plans are not to scale
- Through a Homewise Home For Life Plan people aged 60+ can secure this property for up to 59% less, by purchasing a Lifetime Lease.



10831825/20231025/RK/PJ