



OVER 60?

Secure this property
for up to **59% less!**

Price

£235,000

Leasehold

2x  1x  1x 

**Gange Mews, Middle
Row, Faversham, Kent,
ME13**

Wards
Helping you move forwards



Main features

- Retirement apartment located in Faversham's premier development
- Secure environment for over 55's
- On site amenities include residents lounge & laundry room
- Short stroll to the market place
- Fabulous communal gardens with a central fish pond

Accommodation

FIRST FLOOR

Entrance Hall

Lounge: 15'2 x 13'0 (4.63m x 3.97m)

Kitchen: 10'9 x 6'3 (3.28m x 1.91m)

Bedroom 1: 14'11 maximum x 8'9 (4.55m x 2.67m)

Bedroom 2: 11'9 maximum x 6'0 (3.58m x 1.83m)

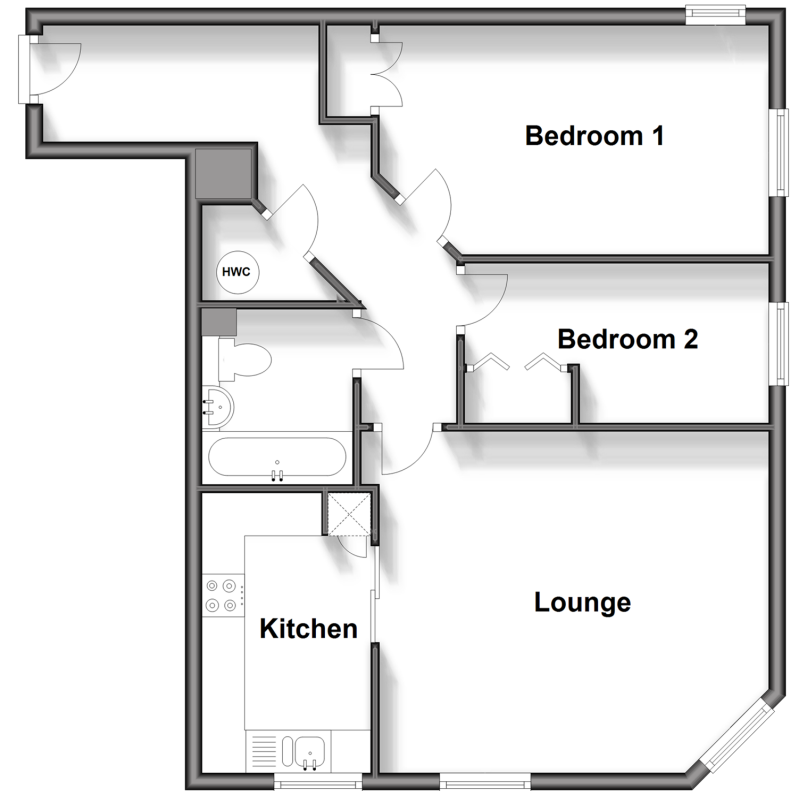
Bathroom

OUTSIDE

Communal Gardens

First Floor

Approx. 60.1 sq. metres (647.4 sq. feet)



Call Faversham - 01795 535517 ■ wardsofkent.co.uk

- Legal advice should be taken to verify fixtures/fittings, planning, alterations and/or lease details
- Appliances & services are untested, dimensions are approximate and floor plans are not to scale
- Through a Homewise Home For Life Plan people aged 60+ can secure this property for up to 59% less, by purchasing a Lifetime Lease.



10831834/20240115/PJ/PJ