



**OVER 60?**

Secure this property  
for up to **59% less!**

**Price**

**£450,000**

**Freehold**

3x  2x  1x 

**Haze Wood Close,  
Faversham, Kent, ME13**

*Wards*  
Helping you move forwards





## Main features

- Exclusive cul-de-sac location
- Within walking distance to mainline station and local primary school
- Solar panels
- Parking for 2/3 cars
- 2 years remaining on NHBC guarantee

## Accommodation

### GROUND FLOOR

Entrance Hall

Cloakroom

Lounge: 14'8 x 11'3 (4.47m x 3.43m)

Kitchen/Diner: 17'11 x 12'7 (5.46m x 3.84m)

### FIRST FLOOR

Landing

Bedroom 1: 14'4 x 13'11 (4.37m x 4.24m)

En-Suite Shower Room

Bedroom 2: 13'2 x 8'7 (4.02m x 2.62m)

Bedroom 3: 13'3 x 9'0 (4.04m x 2.75m)

Bathroom

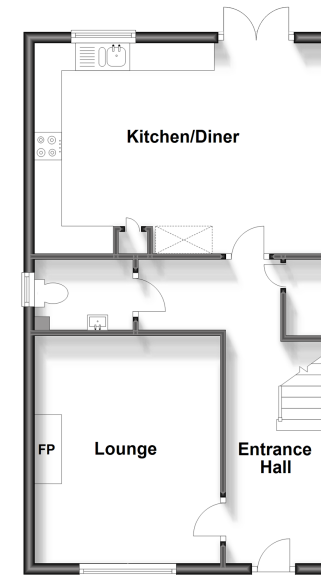
### OUTSIDE

Front Garden

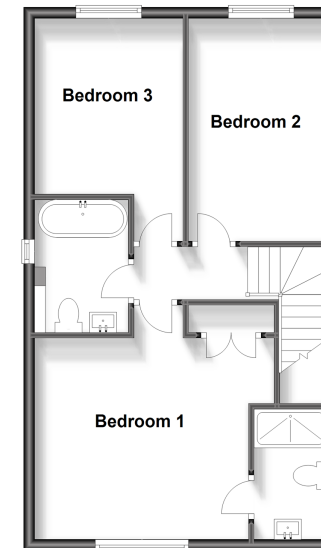
Rear Garden

Parking for 2/3 cars

**Ground Floor**  
Approx. 50.8 sq. metres (546.9 sq. feet)



**First Floor**  
Approx. 50.8 sq. metres (546.9 sq. feet)



**Call Faversham - 01795 535517 ■ [wardsofKent.co.uk](http://wardsofKent.co.uk)**

- Legal advice should be taken to verify fixtures/fittings, planning, alterations and/or lease details
- Appliances & services are untested, dimensions are approximate and floor plans are not to scale
- Through a Homewise Home For Life Plan people aged 60+ can secure this property for up to 59% less, by purchasing a Lifetime Lease.



10831838/20230630/JB/MW