



OVER 60?

Secure this property
for up to **59% less!**

Price

£425,000

Freehold

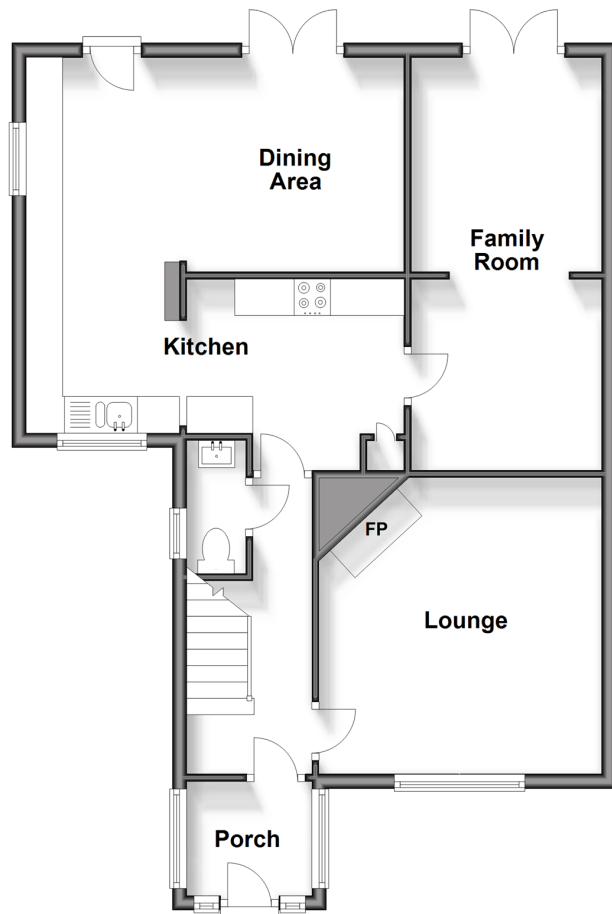
4x  2x  2x 

**Cressway, Faversham,
Kent, ME13**

Wards
Helping you move forwards

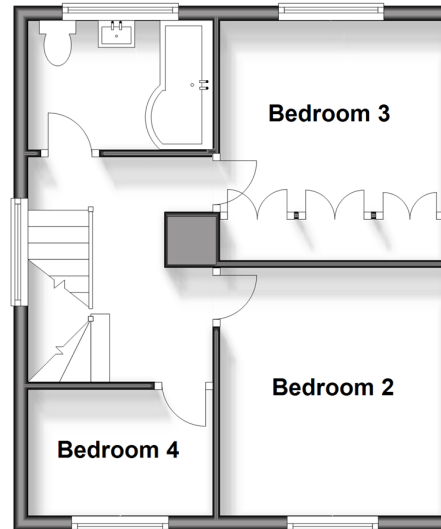
Ground Floor

Approx. 70.0 sq. metres (753.1 sq. feet)



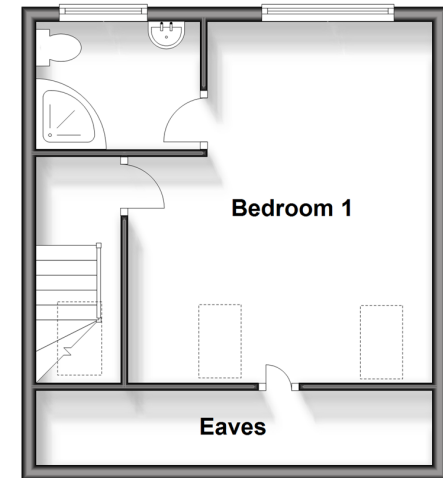
First Floor

Approx. 38.6 sq. metres (414.9 sq. feet)



Second Floor

Approx. 32.9 sq. metres (354.5 sq. feet)



Accommodation

GROUND FLOOR

Porch
Entrance Hall
Lounge: 12'6 x 12'5 (3.81m x 3.79m)
Kitchen: 16'6 x 8'8 (5.03m x 2.64m)
Dining Area: 15'3 x 9'0 (4.65m x 2.75m)
Family Room: 19'8 x 9'0 plus (6.00m x 2.75m)
narrowing to 8'5 x 8'4 (2.57m x 2.54m)

FIRST FLOOR

Landing
Bedroom 2: 10'11 x 10'4 (3.33m x 3.15m)
Bedroom 3: 12'0 x 9'1 (3.66m x 2.77m)
Bedroom 4: 8'3 x 5'10 (2.52m x 1.78m)
Bathroom

SECOND FLOOR

Bedroom 1: 16'5 x 13'9 (5.01m x 4.19m)
En-suite Shower Room

OUTSIDE

Front Garden
Rear Garden
Off road parking



Main features

- Deceptively spacious extended house in quiet cul de sac location
- Exceptional ground floor space perfect for a growing family
- En-suite shower room to main bedroom
- Good sized enclosed rear garden and off road parking
- Within easy reach of town centre and mainline station



Nearest Schools

Primary Schools: Bysing Wood Primary 0.6 miles, Ospringe C of E Primary 0.9 miles

Secondary Schools: Queen Elizabeth's Grammar School 1.2 miles, The Abbey School 1.5 miles



Transport Information

Train Stations: Faversham 1.0 miles, Teynham 4.6 miles, Selling 5.1 miles



Address

Cressway, Faversham, Kent, ME13



Directions

For directions to this property please contact us.



Wards
Helping you move forwards

Call Faversham Branch 01795 535517 ■ wardsofkent.co.uk



■ Legal advice should be taken to verify fixtures/fittings, planning, alterations and/or lease details ■ Appliances & services are untested, dimensions are approximate and floor plans are not to scale
■ Through a Homewise Home For Life Plan people aged 60+ can secure this property for up to 59% less, by purchasing a Lifetime Lease.



10831862/20240323/JB/PJ