



**OVER 60?**

Secure this property  
for up to **59% less!**

**Price**

**£415,000**

**Freehold**

4x  1x  1x 

**Forstall Cottages,  
Chequers Hill,  
Doddington,  
Sittingbourne, Kent,**

*Wards*  
Helping you move forwards





## Main features

- Exclusive estate of 5 houses
- Desirable village location
- Open plan kitchen/dining area
- Private garden and extra plot across road
- Near to the market town of Faversham

## Accommodation

### GROUND FLOOR

Entrance Hall  
 Kitchen/Dining Area: 20'4 x 11'5 (6.20m x 3.48m)  
 Utility Room: 6'9 x 5'1 (2.06m x 1.55m)  
 Bathroom  
 Lounge: 13'6 x 11'5 (4.12m x 3.48m)

### FIRST FLOOR

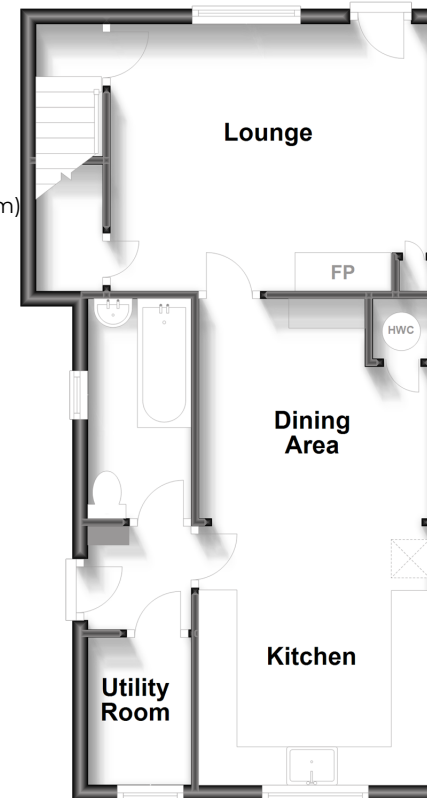
Landing  
 Cloakroom  
 Bedroom 1: 13'5 x 10'2 (4.09m x 3.10m)  
 Bedroom 2: 10'11 x 7'7 (3.33m x 2.31m)  
 Bedroom 3: 9'8 x 8'5 (2.95m x 2.57m)  
 Bedroom 4: 7'8 x 7'7 (2.34m x 2.31m)

### OUTSIDE

Front Garden  
 Side Garden  
 Rear Garden  
 Additional plot over the road

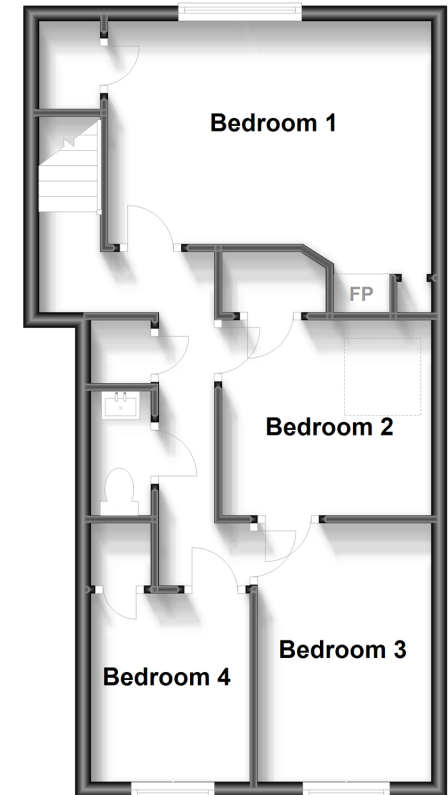
### Ground Floor

Approx. 46.6 sq. metres (502.0 sq. feet)



### First Floor

Approx. 46.9 sq. metres (504.3 sq. feet)



**Call Faversham - 01795 535517 ■ [wardsofkent.co.uk](http://wardsofkent.co.uk)**

- If buying to let, the energy rating will need to be improved to at least 'E' rating before you can let the property
- Legal advice should be taken to verify fixtures/fittings, planning, alterations and/or lease details
- Appliances & services are untested, dimensions are approximate and floor plans are not to scale
- Through a Homewise Home For Life Plan people aged 60+ can secure this property for up to 59% less, by purchasing a Lifetime Lease.