

OVER 60?

Secure this property
for up to **59% less!**



Price
£765,000
Freehold

4x  2x  2x 

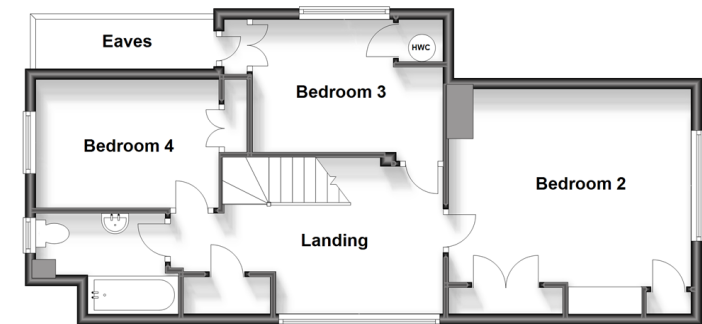
**Selling Court, Selling, Faversham, Kent,
ME13**

Wards
Helping you move forwards

Ground Floor
Approx. 178.2 sq. metres (1918.1 sq. feet)



First Floor
Approx. 55.6 sq. metres (597.9 sq. feet)



Accommodation

GROUND FLOOR

Hallway: 15'11 x 9'7 (4.85m x 2.92m)
Lounge: 22'9 x 13'10 (6.94m x 4.22m)
Dining Area: 9'11 x 9'5 (3.02m x 2.87m)
Sun Room: 22'10 x 9'1 (6.96m x 2.77m)
Kitchen: 15'3 (4.65m) narrowing to 9'9 at narrowest point (2.97m) x 13'0 (3.97m)
Bathroom
Bedroom 1: 13'10 x 12'2 (4.22m x 3.71m)
Side Lobby

Cloakroom
Store Room: 9'1 x 6'4 (2.77m x 1.93m)

FIRST FLOOR

Landing
Bedroom 2: 13'6 x 12'4 (4.12m x 3.76m)
Bedroom 3: 11'0 x 8'0 (3.36m x 2.44m)
Bedroom 4: 11'6 x 8'0 (3.51m x 2.44m)
Bathroom

OUTSIDE

Front and Rear Gardens
Double Garage: 19'9 x 16'1 (6.02m x 4.91m)



Main features

- Prestigious development in desirable village location
- Substantial private plot
- Far reaching views from the front with orchards to rear
- Solar panels producing yearly income reducing energy costs
- Planning permission to create additional living space



Nearest Schools

Primary Schools: Selling C of E Primary 0.1 miles, Sheldwich Primary 1.8 miles

Secondary Schools: The Abbey School 3.0 miles, Queen Elizabeth's Grammar School 3.5 miles



Transport Information

Train Stations: Selling 0.7 miles, Chilham 2.8 miles, Faversham 3.2 miles



Address

Selling Court, Selling, Faversham, Kent, ME13



Directions

For directions to this property please contact us.



Call Faversham Branch 01795 535517 ■ wardsofkent.co.uk



- Legal advice should be taken to verify fixtures/fittings, planning, alterations and/or lease details
- Appliances & services are untested, dimensions are approximate and floor plans are not to scale
- Through a Homewise Home For Life Plan people aged 60+ can secure this property for up to 59% less, by purchasing a Lifetime Lease.



10831874/20230818/JB/MW