



Price
£323,000

Freehold

2x  1x  1x 

**Johnson Court,
Faversham, Kent, ME13**

OVER 60?

Secure this property
for up to **59% less!**

Wards
Helping you move forwards



Main features

- Cul de sac location
- Well presented and thoughtfully designed layout
- Offered for sale chain free
- Close to bus routes and local supermarket
- Easy reach of delightful walks and nature reserve

Accommodation

GROUND FLOOR

Entrance Hall

Lounge: 16'11 x 11'10 (5.16m x 3.61m)

Kitchen: 10'1 x 8'0 (3.08m x 2.44m)

Inner Hall

Bedroom 1: 11'8 x 10'11 (3.56m x 3.33m)

Bedroom 2: 10'1 x 7'10 (3.08m x 2.39m)

Bathroom

OUTSIDE

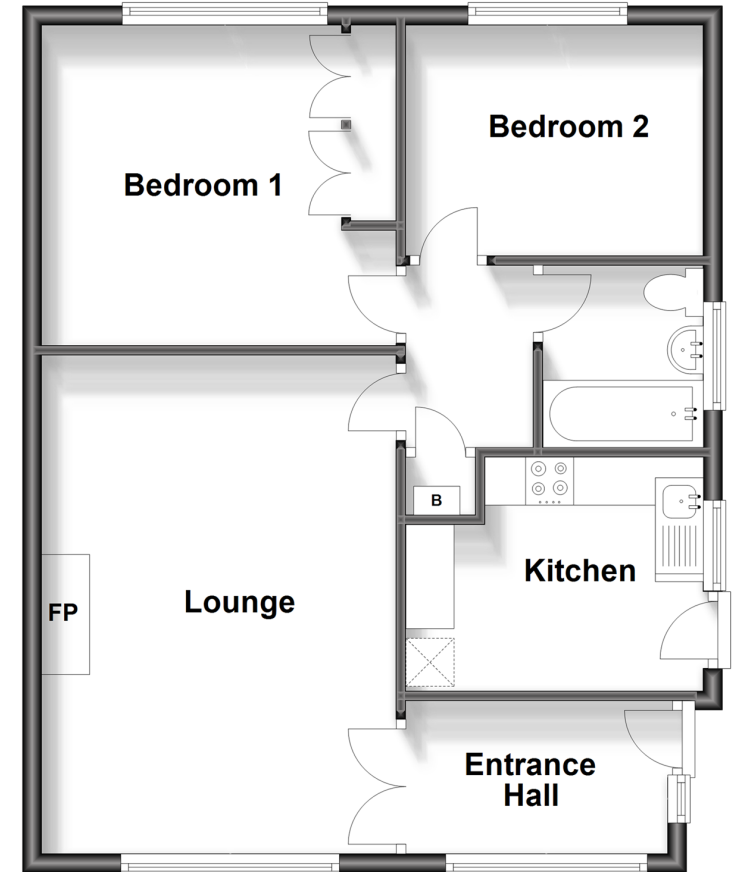
Front Garden

Rear Garden

Hard standing for one car

Ground Floor

Approx. 58.8 sq. metres (632.7 sq. feet)



Call Faversham - 01795 535517 ■ wardsofkent.co.uk

- Legal advice should be taken to verify fixtures/fittings, planning, alterations and/or lease details
- Appliances & services are untested, dimensions are approximate and floor plans are not to scale
- Through a Homewise Home For Life Plan people aged 60+ can secure this property for up to 59% less, by purchasing a Lifetime Lease.



10831883/20231014/****/PJ