



**Price**  
**£240,000**

**Leasehold**

2x  2x  1x 

**Lakeside Avenue,  
Faversham, Kent, ME13  
7FA**

**OVER 60?**

Secure this property  
for up to **59% less!**

*Wards*  
Helping you move forwards





## Main features

- Popular location with stunning views of the fishing lake
- Only 3 flats in the block
- Close to country walks and local pub
- Walking distance to national supermarket
- Allocated parking and additional parking for visitors

## Accommodation

### FIRST FLOOR

Kitchen/Living Area: 21'9 x 10'10 (6.63m x 3.30m)

Bedroom 1: 12'9 x 10'2 (3.89m x 3.10m)

En-Suite Shower Room

Bedroom 2: 13'4 x 9'2 (4.07m x 2.80m)

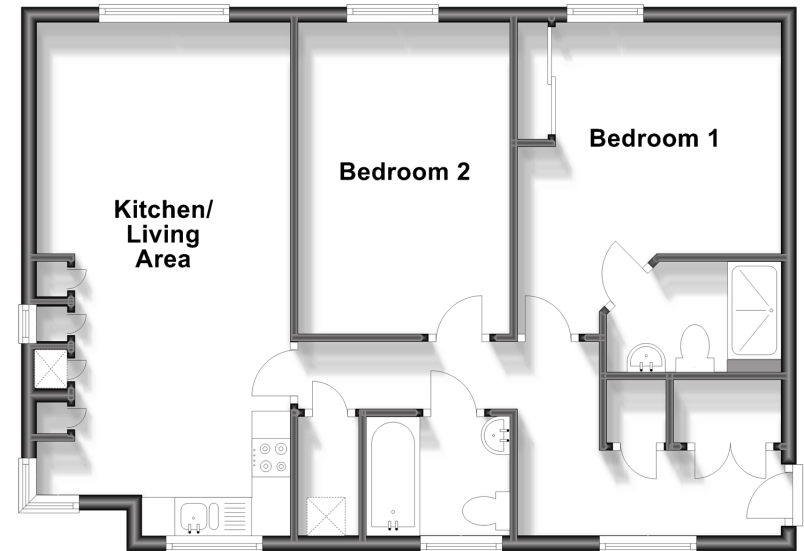
Bathroom

### OUTSIDE

Allocated Parking

### First Floor

Approx. 64.4 sq. metres (693.0 sq. feet)



**Call Faversham - 01795 535517 ■ [wardsofkent.co.uk](http://wardsofkent.co.uk)**

- Legal advice should be taken to verify fixtures/fittings, planning, alterations and/or lease details
- Appliances & services are untested, dimensions are approximate and floor plans are not to scale
- Through a Homewise Home For Life Plan people aged 60+ can secure this property for up to 59% less, by purchasing a Lifetime Lease.



10831923/20231030/JB/MW