



Price

£235,000

Leasehold

2x  1x  1x 

**Gange Mews, Middle
Row, Faversham, Kent,
ME13**

OVER 60?

Secure this property
for up to **59% less!**

Wards
Helping you move forwards



Main features

- Immaculate 2nd floor retirement apartment for over 55's
- Premium location in the heart of Faversham, short stroll to all amenities
- Good size lounge with a lovely aspect where you can watch the world go by
- Communal gardens, residents lounge, laundry room and guest room
- Luxury upgraded kitchen and shower room

Accommodation

SECOND FLOOR

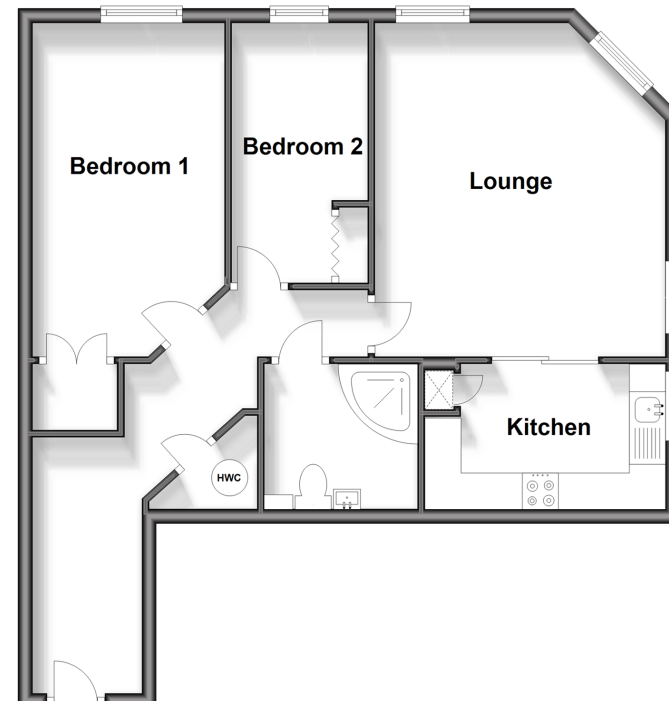
Entrance Hall
 Lounge: 15'2 x 13'7 (4.63m x 4.14m)
 Kitchen: 10'10 x 6'5 (3.30m x 1.96m)
 Bedroom 1 : 14'10 x 8'9 (4.52m x 2.67m)
 Bedroom 2: 11'9 x 5'11 (3.58m x 1.80m)
 Shower Room

OUTSIDE

Communal Gardens

Second Floor

Approx. 61.6 sq. metres (663.3 sq. feet)



Call Faversham - 01795 535517 ■ wardsofkent.co.uk

■ Legal advice should be taken to verify fixtures/fittings, planning, alterations and/or lease details
 ■ Through a Homewise Home For Life Plan people aged 60+ can secure this property for up to 59% less, by purchasing a Lifetime Lease.

■ Appliances & services are untested, dimensions are approximate and floor plans are not to scale



10831953/20240422/PJ/PJ