



Price
£230,000

Leasehold

2x  1x  1x 

**Gange Mews, Middle
Row, Faversham, Kent,
ME13**

OVER 60?

Secure this property
for up to **59% less!**

Wards
Helping you move forwards



Main features

- Spacious ground floor apartment for the over 55's only!
- Delightful communal gardens
- Residents lounge, laundry facilities and guest room available
- Secure retirement complex
- Central location short stroll to the shops and mainline station

Accommodation

GROUND FLOOR

Entrance Hall

Lounge: 17'0 x 10'0 (5.19m x 3.05m)

Kitchen: 10'4 x 5'11 (3.15m x 1.80m)

Bedroom 1: 14'4 x 8'7 (4.37m x 2.62m)

Bedroom 2: 9'10 x 5'11 (3.00m x 1.80m)

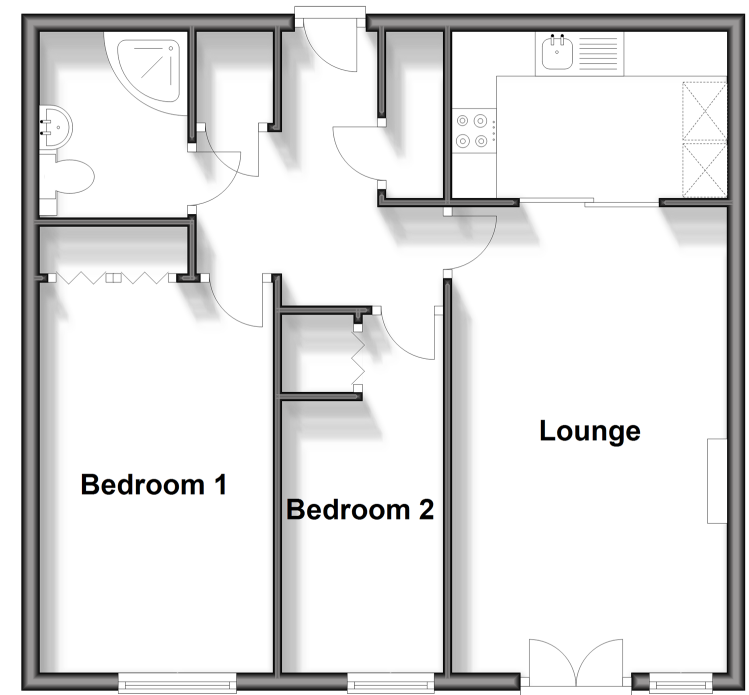
Shower Room

OUTSIDE

Communal Gardens

Ground Floor

Approx. 55.6 sq. metres (598.5 sq. feet)



Call Faversham - 01795 535517 ■ wardsofkent.co.uk

- Legal advice should be taken to verify fixtures/fittings, planning, alterations and/or lease details
- Appliances & services are untested, dimensions are approximate and floor plans are not to scale
- Through a Homewise Home For Life Plan people aged 60+ can secure this property for up to 59% less, by purchasing a Lifetime Lease.



10831974/20240103/JB/PJ