



**OVER 60?**

Secure this property  
for up to **59% less!**

**Price**  
**£165,000**

**Leasehold**

1x  1x  1x 

**Park View Lodge, East  
Street, Faversham, Kent,  
ME13**

*Wards*  
Helping you move forwards





## Main features

- Ground floor flat in modern retirement complex
- Great location just a short walk to town centre shops
- No onward chain
- Communal gardens and residents lounge
- Over 55's only

## Accommodation

### GROUND FLOOR

Entrance Hall

Lounge: 22'11 x 10'3 (6.99m x 3.13m)

Kitchen: 8'1 x 7'6 (2.47m x 2.29m)

Bedroom 1: 15'10 maximum x 12'1 (4.83m x 3.69m)

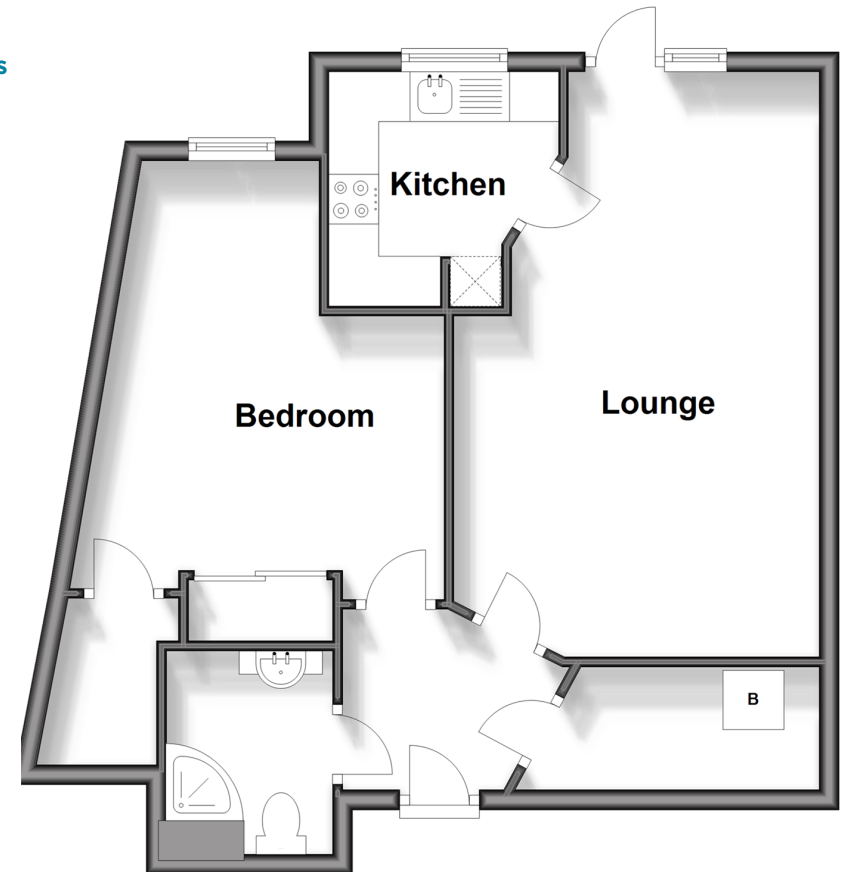
Shower Room

### OUTSIDE

Communal Gardens

## Ground Floor

Approx. 51.6 sq. metres (555.1 sq. feet)



**Call Faversham - 01795 535517 ■ [wardsof Kent.co.uk](http://wardsof Kent.co.uk)**

- Legal advice should be taken to verify fixtures/fittings, planning, alterations and/or lease details
- Appliances & services are untested, dimensions are approximate and floor plans are not to scale
- Through a Homewise Home For Life Plan people aged 60+ can secure this property for up to 59% less, by purchasing a Lifetime Lease.



10831983/20240405/PJ/PJ