



OVER 60?

Secure this property
for up to **59% less!**

Price

£450,000

Leasehold

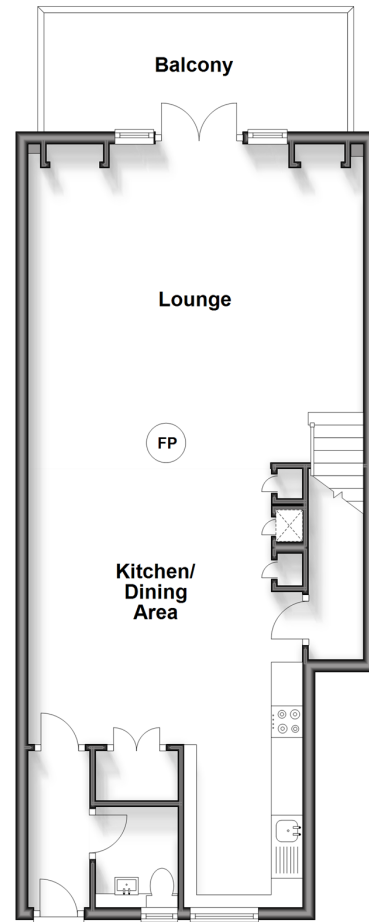
2x  2x  1x 

**North Quay, Conyer,
Sittingbourne, Kent,
ME9**

Wards
Helping you move forwards

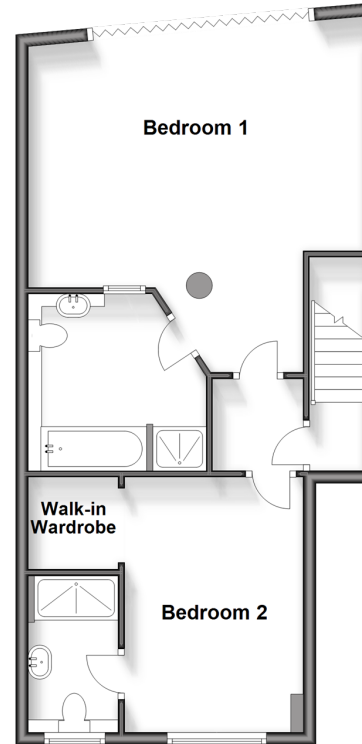
Ground Floor

Approx. 60.8 sq. metres (654.0 sq. feet)



First Floor

Approx. 55.3 sq. metres (595.3 sq. feet)



Accommodation

GROUND FLOOR

Entrance Hall

Cloakroom

Lounge/Kitchen/Dining Area: 40'1 (12.23m)
narrowing to 6'2 at narrowest point
(1.88m) x 17'9 (5.41m)

Balcony

FIRST FLOOR

Landing

Bedroom 1: 17'10 x 17'3 (5.44m x 5.26m)

En-suite Bathroom

Bedroom 2: 13'3 x 9'3 (4.04m x 2.82m)

En-suite Shower Room

OUTSIDE

Rear Deck

Garage

Parking



Main features

- Semi rural location in secure gated development
- Local marina and lovely coastal walks
- Duplex sail loft with views of Conyer Creek
- Garage, parking and slipway access to Conyer Creek
- En-suite facilities to both bedrooms



Nearest Schools

Primary Schools: Teynham Parochial C of E Primary 1.3 miles, Bapchild and Tonge C of E Primary 2.3 miles

Secondary Schools: Meadowfield School 2.7 miles, Sittingbourne Community College 2.7 miles



Transport Information

Train Stations: Teynham 1.0 miles, Sittingbourne 3.5 miles, Kemsley 3.5 miles



Address

North Quay, Conyer, Sittingbourne, Kent, ME9



Directions

For directions to this property please contact us.



Wards
Helping you move forwards

Call Faversham Branch 01795 535517 ■ wardsofkent.co.uk



■ Legal advice should be taken to verify fixtures/fittings, planning, alterations and/or lease details ■ Appliances & services are untested, dimensions are approximate and floor plans are not to scale
■ Through a Homewise Home For Life Plan people aged 60+ can secure this property for up to 59% less, by purchasing a Lifetime Lease.



10832016/20240412/HR/PJ